



HEAVY RENTS

EQUIPMENT LINE CARD





CONTENTS

Excavators	6
Motor Graders	7
Dozers	8
Wheel Loaders	9
Asphalt Compactors	10
Pneumatic Tired Compactors	10
Soil Compactors	11
Articulated Trucks	12
Tracked Dump Trucks	12
Scrapers & Water Equipment	13

BUILT FOR THE WAY YOU WORK

You need functional, well maintained equipment, and you need it now. We've got you covered. At Western States Cat we are ready to fulfill your Heavy Rents needs with flexible options to keep your business profitable and on-time whether you need a machine for a week, a month, or longer.

The equipment you need and the team to support your operation, when you need it. That's the promise we're built to deliver.

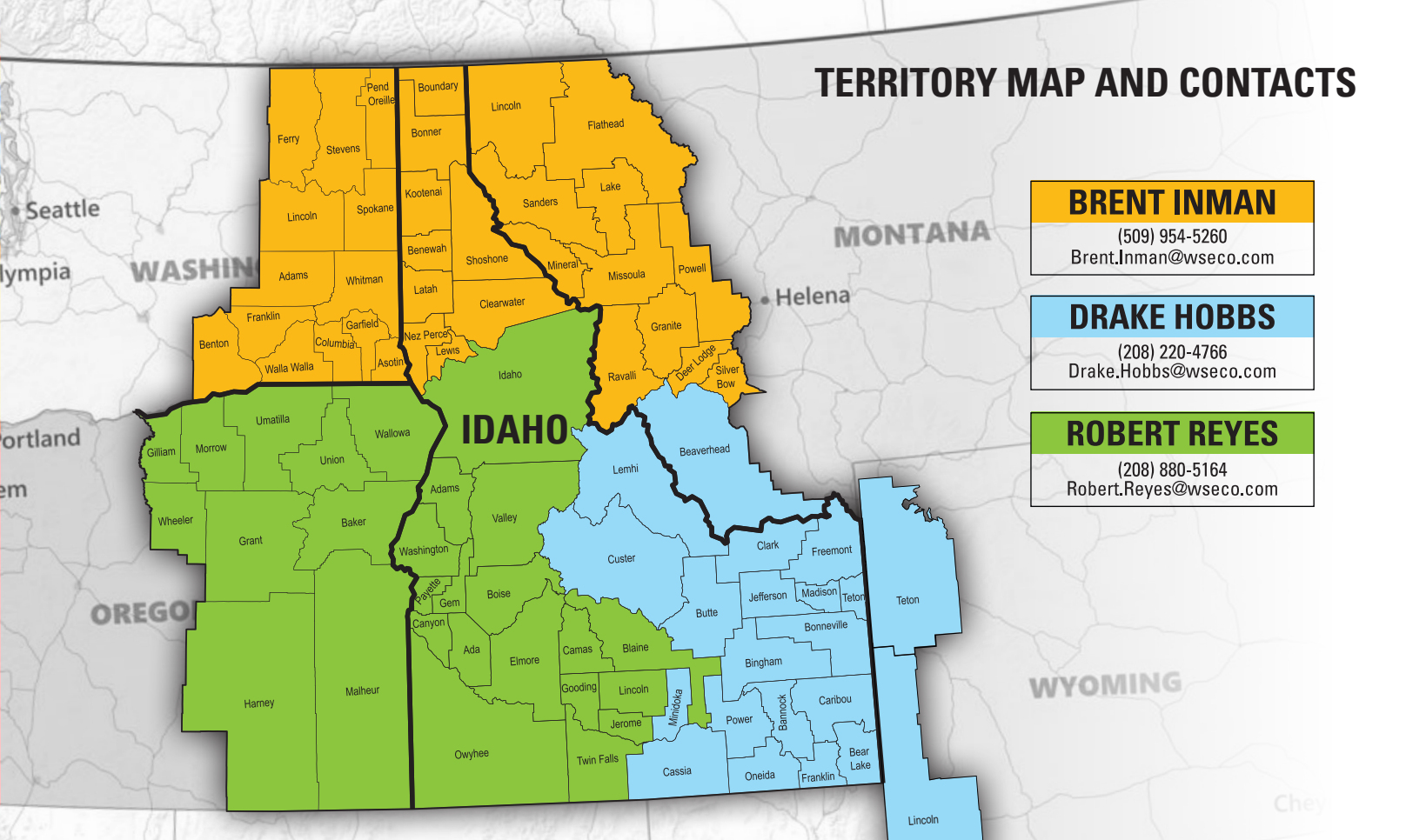
800-852-2287

OUR MISSION

With an absolute focus on safety of our employees and customers, Western States Cat provides best in class products with unparalleled support at a superior value while maximizing our partners' success.



TERRITORY MAP AND CONTACTS



EXCAVATORS



Excavator attachments available:

- 36" Compaction Wheel for 336 Excavator
- 36" Compaction Wheel for 349 Excavator

- Cat H-160 Hammer for 336 Excavator 8,000lb Hammer
- Cat H-180 Hammer for 349 Excavator 10,000lb Hammer

- MP 30 Multi-Processor for 349 Excavator
- Concrete cutter
- Shear Jaws

Model	HP	Approximate Weight (lbs)	Bucket	Max Reach/Depth	Configurations
329/330 Long Reach	204	69,902	1 Yard Muck	60' / 48'4"	Pin on Bucket
335	204	81,315	36" - 60"	12'4" Stick 33'4" / 21'2"	Quick Coupler/Thumb
336	303	88,400	36" - 72"	12'6" Stick 38'5" / 26'10"	Quick Coupler/Thumb
349	425	112,400	36" - 80"	12'10" Stick 39'10" / 26'11"	Quick Coupler/Thumb
374	476	166,661	48" - 84"	13'7" Stick 44'11" / 29'11"	Quick Coupler
390F	524	202,874	96"	11'2" Stick 48'8" / 28'6"	Pin on Bucket

MOTOR GRADERS



Model	HP	Approximate Weight (lbs)	Blade Length (ft)	Configurations
14M	259-297	53,738	16'	Ripper(s)/ARO
14M3	238-285	57,250	16'	Ripper(s)/ARO

DOZERS



Model	HP	Approximate Weight (lbs)	Blade	Configurations
D6N LGP	150	39,895	VPAT	Drawbar/ARO
D5 LGP	170	42,263	VPAT	Drawbar/ARO
D6T XL	202	52,167	VPAT/SU	Ripper(s) ARO
D6T XW	202	53,170	VPAT/SU	Ripper(s) ARO
D6T LGP	202	53,561	VPAT	Ripper(s) ARO
D8T	312	87,733	U	Ripper(s) ARO
D9T	436	106,618	SU/U	Ripper(s) ARO
D10T/2	600	154,700	U	Ripper(s) ARO

WHEEL LOADERS



6' and 8' pallet forks available for 966-972 only

Model	HP	Approximate Weight (lbs)	Bucket Capacity (yards)	Configurations
966M	311	52,161	5 - 6.25 Yard Bucket	Fusion Quick Coupler
972M	337	56,123	5.50 - 6.50 Yard Bucket	Fusion Quick Coupler
980M	425	66,623	7 - 8 Yard Bucket	Pin On Bucket
982M	436	78,742	8 - 9 Yard Bucket	Pin On Bucket
988K	492	111,400	10 Yard Bucket	Pin on Bucket



ASPHALT COMPACTORS

Model	HP	Approximate Weight (lbs)	Drum Width (in)
CB54B	133	23,525	67
CB54 XW	137	26,230	79
CB13	142	28,440	79
CB15	142	30,391	84
CB64	137	28,616	84
CB66	142	29,057	84
CB68B	142	31,162	84
CCS9	131	19,842	84



PNEUMATIC TIRED COMPACTORS

Model	HP	Approximate Weight (lbs)	Compaction Width (in)
CW14	100.5	28,528	68
CW16	100.5	33,069	68

SOIL COMPACTORS

Model	HP	Approximate Weight (lbs)	Drum Width (in)
CP56B	157	25,707	84
CP68B	157	32,370	84
CS56B	157	25,346	84
CS68B	157	31,572	84
CS74B	173	35,264	84



SOIL COMPACTORS

Model	HP	Approximate Weight (lbs)	Blade Width (ft. in)
815F	253	45,765	12.4





ARTICULATED TRUCKS

Model	HP	Operating Weight (empty)	Capacity/Heaped (yds ³)	Notes
730	321	50,376 lbs	24.0	Tailgate
730	370	53,131 lbs	24.6	Tailgate
740B	484	75,824 lbs	33.5	Tailgate
745	504	73,634 lbs	34.7	Tailgate



TRACKED DUMP TRUCKS

Model	HP	Operating Weight (empty)	Capacity/Heaped (yds ³)	Notes
T14R	275	36,663	8.5	Rubber Track



SCRAPERS

Model	HP	Cap. Struck/ Heaped (yd ³)	Top Speed Load (mph)
623	330/365	18/23	32
627	330/365	16/22	32



WATER EQUIPMENT

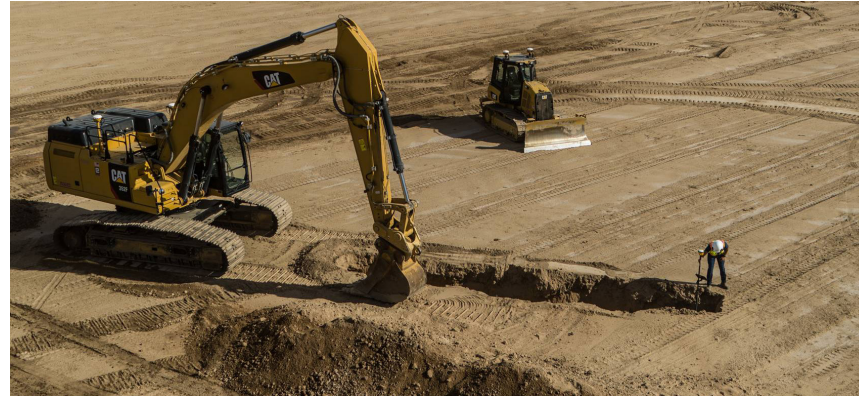
Capacity	Transport
12,000 Gallon Stand Tank	5th Wheel
6,000 Gallon	730 Water Truck
8,000 Gallon	740 Water Truck

THE TECHNOLOGY YOU WANT



Whether you are experienced in the use of technology to enhance machine productivity or new to electronic productivity tools, our experienced award-winning team of construction technology specialists are ready to assist your organization with expertise in Trimble/ Caterpillar grade control, telematics and productivity technology. Rent GPS ready machines to accept your Cat/Trimble system or rent an additional system with the machine through our SITECH Western States dealership.

sitech-ws.com

This image shows a blank sheet of white paper with horizontal ruling lines. The lines are evenly spaced and extend across the width of the page. There are no margins, text, or other markings on the paper.



WE'RE READY WHEN YOU ARE.
800-852-2287

All rentals subject to credit approval. Customer must provide proof of insurance. Rates do not include any local sales tax. All rates are on a per machine basis. All machines are subject to availability. There is a charge on top of the rental rate for property tax. All daily maintenance such as oil, filters, wear items and fuel are the responsibility of the lessee. At the termination of the rental, the machine must be returned in the same condition as when it was delivered, subject only to reasonable wear.