



# RAILROAD SOLUTIONS

**SALES • RENTAL • PARTS • SERVICE**



**877-994-4228**

[westernstatescat.com/railroad-solutions](http://westernstatescat.com/railroad-solutions)

## DEDICATED RAIL TEAM

Our experienced Sales, Rental, Service and Parts team is ready to assist your operation with everything from initial consultation to equipment sales and rental, plus on-site product introduction and operator training.

## HI-RAIL ASSEMBLY

Our Hi-Rail Assembly Team is committed to the development, installation and maintenance of effective Hi-Rail equipment and rail-specific attachments.

## DERAILMENT RESPONSE TEAM

In an emergency, you need help quickly. Our Derailment Response Team provides a 24-hour response to emergencies and is ready to support on-site as needed.

## ON-SITE TEST TRACK

We use an on-site test track for annual inspections, as well as for testing our Hi-Rail equipment before we send it into the field.

## FIELD SERVICE

With access to the Caterpillar dealer network, we have dedicated field technicians ready to provide a timely response and solutions to issues when and where they arise.

## CONTACT US

**Main Line:** 877-994-4228

**Email:** RRSRentals@wseco.com

**Rental Sales Rep:** (509) 496-0048

**Operations Manager:** (509) 638-8661

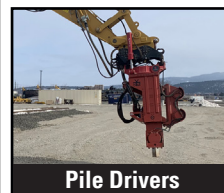
**Rental Coordinator:** (509) 533-9192

**Maintenance Planner:** (509) 342-8583



## HI-RAIL EXCAVATORS

Model	Approx. Net Power	Approx. Operating Weight	Approx. Max Reach/Depth	Thumb/Coupler
305.5 Hi-Rail	44.1 hp	15,200 lbs	19' 9" / 12' 8"	Roto-tilt
<b>Attachments »</b> 360 Roto Coupler, Graptor Bucket, 400lb Grapple, Tie Inserter				
308 Hi-Rail	70 hp	29,000 lbs	20' / 12.5'	Cat Pin Grabber, Thumb
<b>Attachments »</b>				
310 Hi-Rail	70.3 hp	30,000 lbs	25' 1" / 17' 1"	Roto-tilt
<b>Attachments »</b> 360 Roto Coupler, Graptor Bucket, Tie Inserter, Brush Cutter				
312 Hi-Rail	90 hp	45,300 lbs	28' 3" / 19' 8"	Roto-tilt
<b>Attachments »</b> 360 Roto Coupler, Graptor Bucket, Tie Inserter, Tamper, Culvert Cleaner, Cold Air Blower, Tinbin Vacuum, 8' Clean-up Blade				
320 Hi-Rail	153 hp	76,000 lbs	32' 3" / 22' 0"	Roto-tilt
<b>Attachments »</b> 360 Roto Coupler, Graptor Bucket, Tie Inserter, Tamper, 12' Undercutter Bar, Snow Blower, 20T Grapple, Culvert Cleaner, Cold Air Blower, Tinbin Vacuum, 8' Clean-up Blade, Rail Cart				
325 Hi-Rail	174 hp	76,000 lbs	32' 1" / 22' 0"	Roto-tilt
<b>Attachments »</b> 360 Roto Coupler, Graptor Bucket, Tie Inserter, Tamper, 12' Undercutter Bar, Pile Driver, Panel Boss, 20T Grapple, Culvert Cleaner, Cold Air Blower, Tinbin Vacuum, 8' Clean-up Blade, Rail Cart, Ballast Broom, Brush Cutter, Snow Blower				



Pile Drivers



Tie Inserters



Tampers



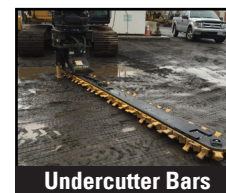
Brush Cutters



Cold Air Blowers



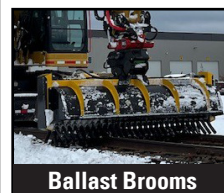
Tinbin Vacuums



Undercutter Bars



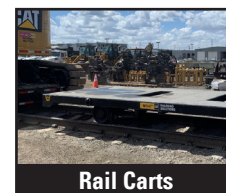
Grapples



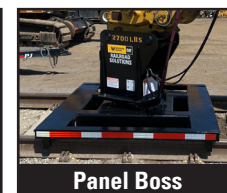
Ballast Brooms



8' Clean-up Blade



Rail Carts



Panel Boss



## BACKHOES - Rail Fleet

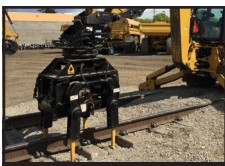
Model	Approx. Net Power	Approx. Operating Weight	Approx. Depth Standard/Extended	Thumb/Coupler
420 4WD IT	93 hp	24,000 lbs	19' 9" / 12' 8"	Yes
<b>Attachments »</b> 8" Cribbing Bucket, Thumb, Aux. Hydraulics, Tie Insertter, Tamper, Rail Rider (Hi-Rail), Forks, Hydraulic Deploy Gear				
444 4WD IT	101 hp	30,000 lbs	25' 1" / 17' 1"	Yes
<b>Attachments »</b> 8" Cribbing Bucket, Thumb, Aux. Hydraulics, Tie Insertter, Tamper, Rail Rider (Hi-Rail), Forks, 6' Undercutter Bar				



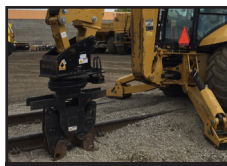
Cribbing Buckets



Thumbs



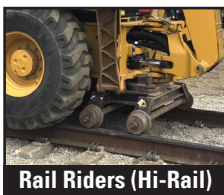
Tampers



Tie Inserters



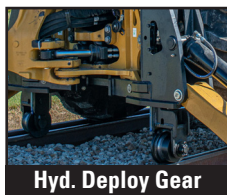
Aux. Hydraulics



Rail Riders (Hi-Rail)



Forks



Hyd. Deploy Gear

## WHEEL LOADERS - Rail Fleet

Model	Approx. Net Power	Approx. Operating Weight	Approx. Bucket Capacity	Coupler
950	230 hp	46,000 lbs	3.75 - 5.75 yds	Yes
<b>Attachments »</b> Offset Wheels, Material Arm, Bucket, 8' Forks				
972	299 hp	57,100 lbs	3.75 - 13.0 yds	Yes
<b>Attachments »</b> Offset Wheels, Material Arm, Bucket, 8' Forks				



Offset Wheels



Material Arms



Buckets



Forks

# MISC. HI-RAIL GEAR



## HI-RAIL ROTARY DUMP TRUCKS

18,000 lb. GVWR Front Axle. 40,000 lb. GVWR Rear Axle. 178" Wheel Base. Pintle hitch. Full Air Brakes. 80 Gallon Fuel Tank. Manual Rail Dogs for dumping. 14' Dump Box.



## HI-RAIL GRAPPLE TRUCKS

Front Axle 20,000 lb. GVWR Front Axle. 46,000 lb. GVWR Rear Axle. 255" Wheelbase. 470 HP DD 13 12.8L Diesel Engine. Pintle hitch. 80\ Gallon Fuel Tank. 22' boom with 3' hydraulic extension. ESM-HP 30" Magnet. Creep Drive (as option).



## HI-RAIL ROTARY DUMP TRUCKS WITH WATER TANK

4,000 gallon tank.



## RAIL CARTS

18 foot solid floor. Brakes available. 70,000lb axle and wheel. 14 foot pintle tong. Front and rear hitch.



## HI-RAIL TRAILERS

Available in powered 12T or 20T.  
12T approx. operating weight is 8,700 lbs and carries 312-316 non Hi-Rail excavators.

20T approx. operating weight is 11,750 lbs and carries 320-325 non Hi-Rail excavators.



## 90K TRAILER/MACHINE MOVER FOR ON-TRACK

90K Capacity. Self-propelled. Remote control available.



## HI-RAIL PICKUPS

# EQUIPMENT RENTALS. SIMPLIFIED.

- Select equipment
- View rates
- Request a quote
- Manage your rentals
- Arrange transport
- Request service
- +MORE**



SCAN ME

Scan this code to learn more about **The Cat Rental Store** customer portal

Western States **CAT** Rental Store



## CERTIFIED TRAINING AVAILABLE

- Aerial Work Platform / MEWP's Training
- Forklift & Telehandler Training
- Competent Person Training
- Equipment Familiarization Training
- 2D & 3D Worksite Training

Ask your sales rep for more information.



# CONTENTS

## CAT® EQUIPMENT

Skid Steer Loaders, Compact Track Loaders	pg 8
Dozers, Asphalt & Soil Compactors, Motor Graders	pg 9
Mini Excavators	pg 10
Excavators	pg 11
Telehandlers, Backhoe Loaders	pg 12
Skip Loaders, Compact Wheel Loaders, Wheel Loaders	pg 13

## ROTATING TELEHANDLERS

Magni Rotating Telehandlers	pg 14
-----------------------------	-------

## AERIAL EQUIPMENT

Electric Lifts, Material Lifts, Vertical Mast Lifts	pg 15
Articulated Boom Lifts, Telescopic Boom Lifts	pg 16
Scissor Lifts, Scissor Lift Trailers	pg 17

## COMPACT CRAWLER BOOM LIFTS

JLG X600 AJ & JLG X770AJ Crawler Boom Lifts	pg 18
---	-------

## MISCELLANEOUS EQUIPMENT

Dump Trucks, Water Trucks, F150 Pickups, Personnel Carts, Compact Utility Equipment, Fork Lifts	pg 19
Street Sweepers, Vacuum Excavators, Dump Trailers, Utility Trailers, Generators, Water Trailers	pg 20
Floor Sweepers, Hot Water Pressure Washers, Heavy Duty Screeners, Portable Screening Plants, Wood Chippers, Pumps	pg 21
Light Towers, Air Compressors, Welders, Heaters, Ground Thaws, Site Access, Spill Containment Berms	pg 22
Shoring, Lasers, Pneumatic Breakers, Compactors & Rammers, Concrete Buggies, Cut-Off Saws, Floor Saws	pg 23



## SKID STEER LOADERS

Model	Approximate Net Power	Approximate Operating Weight	Approximate Operating Capacity
226	65.8 hp	5,849 lbs	1,550 lbs
236	74.3 hp	6,559 lbs	1,800 lbs
246	74.3 hp	7,478 lbs	2,200 lbs
262	74.3 hp	8,296 lbs	2,700 lbs



## COMPACT TRACK LOADERS

Model	Approximate Net Power	Approximate Operating Weight	Approximate Operating Capacity
239	67.1 hp	7,434 lbs	1,530 lbs
259	74.3 hp	8,987 lbs	2,010 lbs
279	74.3 hp	10,095 lbs	2,220 lbs
299	98 hp	11,464 lbs	3,480 lbs

### AVAILABLE ATTACHMENTS



AUGERS



BRUSH CUTTERS



BROOMS



BUCKETS: General purpose, screening, grapple



HARLEY RAKES



HYDRAULIC HAMMERS



COMPACTORS



DOZER BLADES



FORKS



8' GRADER BLADES



HARLEY RAKES



HYDRAULIC HAMMERS



MOWER DECKS



PICKUP BROOM



POST DRIVERS



ROCK PICKERS



ROCK ROLLERS



ROTARY TILLERS



SILT FENCE PULLERS



SNOW BLOWERS



SNOW PLOWS



SPREADERS



TRENCHERS



TRIMBLE TECHNOLOGY PACKAGE



## DOZERS

Model	Approximate Net Power	Approximate Operating Weight	Blade
D1 (previously D3K2)	80 hp	17,544 lbs	VPAT
D3 (previously D5K2)	104 hp	20,534 lbs	VPAT
D4 (previously D6K2)	130 hp	29,258 lbs	VPAT
D5 (previously D6N)	166 hp	36,943 lbs	VPAT



## ASPHALT AND SOIL COMPACTORS

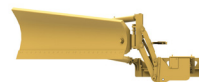
Model	Type	Approximate Net Power	Approximate Operating Weight	Drum Width
CB24	smooth double drum	36 hp	6,003 lbs	47"
CB34	smooth double drum	49 hp	8,155 lbs	51"
CB36	smooth double drum	49 hp	8,385 lbs	55"
CS-323/CS34	single smooth drum	74 hp	9,799 lbs	50"
CS44	single smooth drum	100.6 hp	15,307 lbs	66"
CS54	single smooth drum	131 hp	23,265 lbs	84"
CP-323/CP34	pad foot	74 hp	11,000 lbs	50"
CP44	pad foot	100.6 hp	15,935 lbs	66"



## MOTOR GRADERS

Model	Approximate Net Power	Approximate Operating Weight	Blade Length
12 AWD	183-213 hp	35,783 lbs	14'
140/140 AWD	183-208 hp	42,647 lbs	14'
140 3D	183-208 hp	42,647 lbs	14'

### AVAILABLE ATTACHMENTS

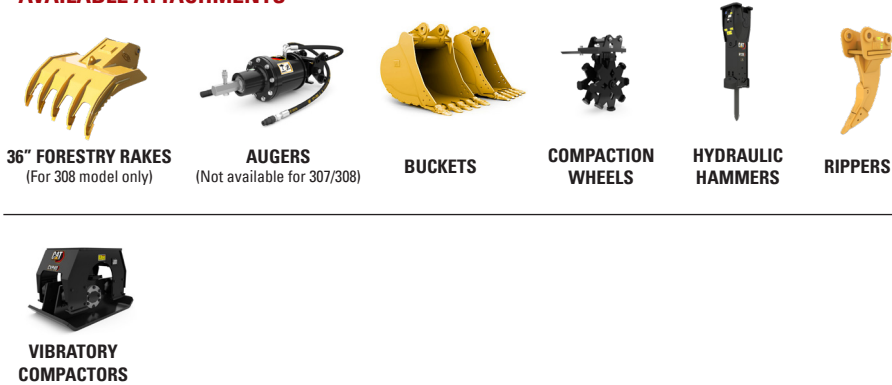




## MINI EXCAVATORS

Model	Approximate Net Power	Approximate Operating Weight	Approx. Max Reach/Depth	Thumb/Coupler
301.7	19.2 hp	4,068 lbs	12' 2" / 7' 3"	X
302.7	20.7 hp	6,239 lbs	14' 8" / 8' 4"	X
303	23.5 hp	7,204 lbs	15' 9" / 9'	X
303.5	23.5 hp	8,209 lbs	17' 6" / 10' 4"	X
304	40.2 hp	8,996 lbs	18' 0" / 11' 3"	X
305	40.2 hp	11,443 lbs	19' 1" / 12' 0"	X
305.5	44.1 hp	11,958 lbs	19' 9" / 12' 8"	X
306	55.9 hp	15,766 lbs	20' / 12' 10"	X
307	50.6 hp	16,030 lbs	20' 3" / 13' 4"	X
308	65 hp	20,678 lbs	24' 1" / 15' 5"	X
310	70.3 hp	22,447 lbs	25' 1" / 17' 1"	X

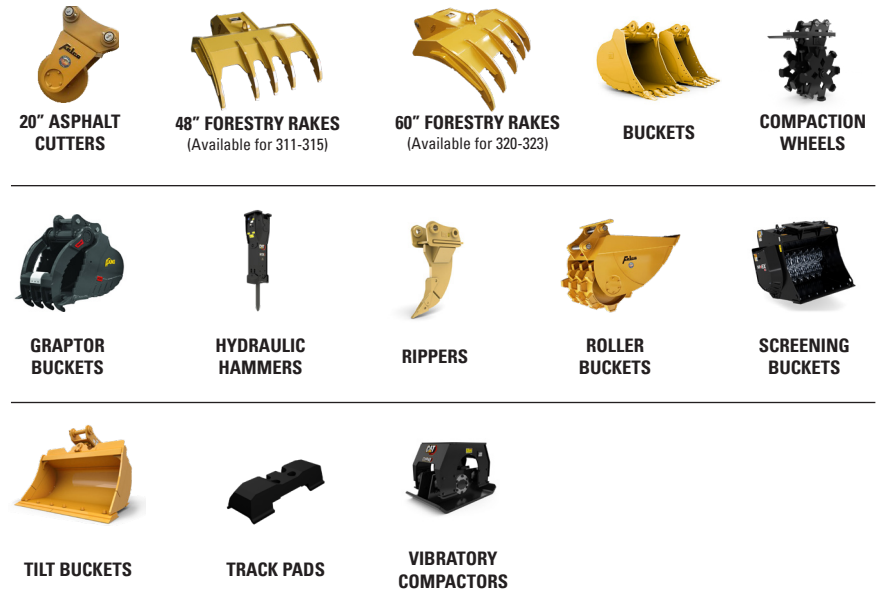
### AVAILABLE ATTACHMENTS



## EXCAVATORS

Model	Approximate Net Power	Approximate Operating Weight	Approx. Max Reach/Depth	Thumb/Coupler
313	90 hp	29,100 lbs	28' 3" / 19' 8"	X
315	113 hp	37,920 lbs	28' 6" / 19' 6"	X
316	113 hp	37,920 lbs	30' 5" / 21' 7"	X
317	130 hp	40,000 lbs	29' 7" / 21' 7"	X
320	153 hp	48,281 lbs	32' 3" / 22' 0"	X
323	161 hp	56,860 lbs	32' 4" / 22' 1"	X
325	174 hp	57,100 lbs	32' 1" / 22' 0"	X
330	239 hp	68,209 lbs	35' 0" / 23' 9"	X

### AVAILABLE ATTACHMENTS





## TELEHANDLERS



Model	Gross Power	Rated Capacity	Lift Height
TH255	74 hp	5,500 lbs	18' 4"
TL642	101 hp	6,500 lbs	42'
ST8042 (SkyTrak)	110 hp	8,000 lbs	41' 11"
TL943	111 hp	9,000 lbs	43'
ST10054 (SkyTrak)	110 hp	10,000 lbs	53' 2"
TL1055	142 hp	10,000 lbs	54' 9"
TL1255	142 hp	12,000 lbs	54' 6"
XR1570 (Xtreme Manufacturing)	134 hp	15,000 lbs	70'

### AVAILABLE ATTACHMENTS



ADJUSTABLE  
MATERIAL ARMS



BASKETS



BUCKETS



HAY FORKS



LIFT HOOKS



TRASH HOPPERS



TRUSS BOOMS



TILT ROTATE  
CARRIAGES



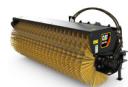
TIRE SOCKS AVAILABLE  
FOR PURCHASE



## BACKHOE LOADERS

Model	Approximate Net Power	Approximate Operating Weight	Approximate Depth Standard/Extended
420	93 hp	24,251 lbs	14' 3" / 17' 9"
420 IT	93 hp	24,251 lbs	14' 3" / 17' 9"

### AVAILABLE ATTACHMENTS



BROOM



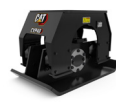
FORKS



GRAPTOR  
BUCKETS



HYDRAULIC  
HAMMERS



VIBRATORY  
COMPACTORS



## SKIP LOADERS

Model	Approximate Net Power	Approximate Operating Weight	Dump Height
415	68 hp	17,637 lbs	9'3"



## COMPACT WHEEL LOADERS

Model	Approximate Net Power	Approximate Operating Weight	Approximate Bucket Capacities	Coupler
906	73 hp	12,346 lbs	1 - 2 yds	X
908	73 hp	14,032 lbs	1 - 2 yds	X

### AVAILABLE ATTACHMENTS



FORKS



SNOW BLOWERS



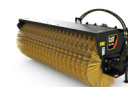
SNOW PLOWS



## WHEEL LOADERS

Model	Approximate Net Power	Approximate Operating Weight	Approximate Bucket Capacities	Coupler
926	168 hp	28,193 lbs	1.9 - 3.0 yds	X
938	168-182 hp	36,216 lbs	3.0 - 3.5 yds	X
950	230 hp	42,357 lbs	3.75 - 5.75 yds	X

### AVAILABLE ATTACHMENTS



ANGLE BROOMS



FORKS

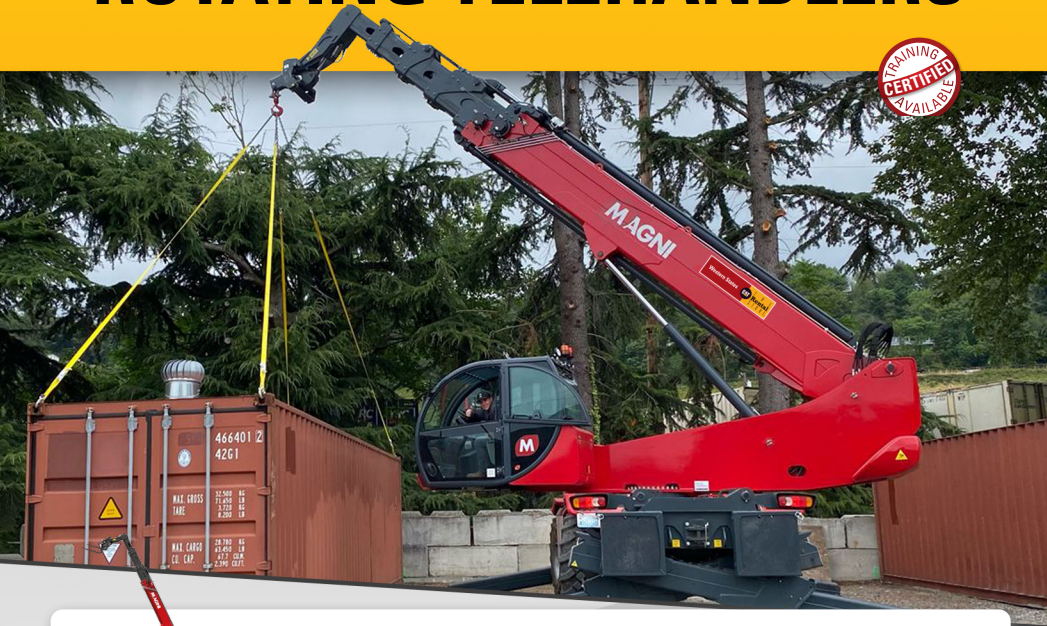


MATERIAL HANDLING ARMS



SNOW PLOWS

# MAGNI RTH ROTATING TELEHANDLERS



## MAGNI RTH ROTATING TELEHANDLERS

Model	Machine Width	Machine Length	Lifting Capacity	Lifting Height	Maximum Reach
RTH 6.25	8' 2"	21' 5"	13,200 lb	82'	69' 10"
RTH 6.30	8' 4"	25' 7"	13,200 lb	97' 9"	85' 4"
RTH 6.35	8' 4"	25' 7"	13,200 lb	114' 6"	88' 6"

### AVAILABLE ATTACHMENTS



EXTENDABLE ROTATING PLATFORM



HOOK 6T



9' JIB 4,400 LB



48'' ROTATING 2.5T FORK CARRIAGE



48'' FORK 6T



72'' FORK 6T

# AERIAL EQUIPMENT



## ELECTRIC LIFTS

Model	Max Platform Height	Max Horizontal Reach	Platform Width
GENIE Z-30/20N	30'	21' 5"	3' 10"
GENIE Z-34/22 DC	34' 6"	22' 3"	4' 8"
GENIE Z-45/25 DC	45' 9"	25' 1"	6'
GENIE Z-60 Hybrid	59' 7"	36' 7"	8'
GENIE TZ-50 Towable	49' 6"	29' 2"	3' 8"

### AVAILABLE ATTACHMENTS



280 SKY WELDERS



FALL ARREST BARS



PANEL CRADLE GLAZING RACKS



PIPE CRADLES



TIRE SOCKS AVAILABLE FOR PURCHASE



## MATERIAL LIFTS

Model	Working Height	Length Operating	Width Operating
GENIE SLA-20	21' 2"	6' 10"	6' 1"



## VERTICAL MAST LIFTS

Model	Platform Height	Platform Length	Platform Width
GENIE GR-12	11' 4"	2' 11"	2' 5"
GENIE GR-20	19' 9"	2' 11"	2' 5"



## ARTICULATED BOOM LIFTS

Model	Max Platform Height	Max Horizontal Reach	Platform Width
GENIE Z-30/20	30'	21' 5"	3' 10"
GENIE Z-34/22 RT 4WD	34' 7"	22' 3"	4' 8"
GENIE Z-45	45' 9"	25' 1"	6'
GENIE Z-60	59' 7"	36' 7"	6'
GENIE Z-80	78'	60'	6'
GENIE Z-135	135'	69' 9"	6'

### AVAILABLE ATTACHMENTS



280 SKY WELDERS



FALL ARREST BARS



PANEL CRADLE GLAZING RACKS



PIPE CRADLES



TIRE SOCKS AVAILABLE FOR PURCHASE



## TELESCOPIC BOOM LIFTS

Model	Max Platform Height	Max Horizontal Reach	Platform Width
GENIE S-45 4WD	45'	36' 8"	8'
GENIE S-60J 4WD	60'	40' 6"	8'
GENIE S-65	65'	56' 2"	8'
GENIE S-80J	80' 5"	54' 9"	8'
GENIE S-85	85'	76' 6"	8'
GENIE S-105	105'	75'	8'
GENIE S-125	125'	80'	8'
GENIE SX-135	135'	90'	8'
GENIE S-150	152'	80'	8'
GENIE S-180	180'	80'	8'

### AVAILABLE ATTACHMENTS



280 SKY WELDERS



FALL ARREST BARS



PANEL CRADLE GLAZING RACKS



PIPE CRADLES



TIRE SOCKS AVAILABLE FOR PURCHASE



## SCISSOR LIFTS

Model	Platform Height	Platform Length	Machine Width
<b>SLAB</b>			
GENIE GS-1330	12' 10"	4' 8"	2' 6.5"
GENIE GS-1432M	14' 1"	4' 7"	32"
GENIE GS-1930	19'	6'	2' 6"
GENIE GS-1932M	18' 2"	4' 7"	32"
GENIE GS-2032	20'	8'	2' 8"
GENIE GS-2632	26'	8'	2' 8"
GENIE GS-2646	26'	8'	3' 10"
GENIE GS-3232	32'	8'	2' 8"
GENIE GS-3246	32'	8'	3' 10"
GENIE GS-4047	39'	8' 2"	3' 11"

### ROUGH TERRAIN (OUT RIGGERS)

GENIE GS-2669 RT OR	26' 2"	10' 3"	5' 9"
GENIE GS-3369 RT OR	32' 8"	10' 3"	5' 9"
GENIE GS-4069 RT OR	40' 3"	10' 3"	5' 9"
GENIE GS-4390 RT	43'	12' 11.25"	7' 8"
GENIE GS-5390 RT	53'	16'	7' 8"

### AVAILABLE ATTACHMENTS



ACCESS DECKS



PIPE CRADLES



TIRE SOCKS AVAILABLE FOR PURCHASE

## SCISSOR LIFT TRAILERS

Single axle 5'x10' and double axle 6'x14'  
Tilt deck up to 10,000 lb capacity



# OVERHEAD TASKS SAFELY WITHIN REACH



## JLG X600AJ & X770AJ COMPACT CRAWLER BOOM

When working indoors or outside, the Compact Crawler Boom has your job covered. You have the ability to go more places due to the low profile and compact dimensions, allowing it to travel through doorways.

The compact crawler is easy to operate and because the compact crawler is so lightweight, it can be set up on sensitive flooring and landscaping.

### X600AJ



**MACHINE WIDTH:** 2' 7"  
**MACHINE LENGTH:** 30'  
**PLATFORM HEIGHT:** 59' 3"  
**WORKING HEIGHT:** 66'  
**PLATFORM HEIGHT:** 4' 10" X 2' 6"



### X770AJ



**MACHINE WIDTH:** 3' 3"  
**MACHINE LENGTH:** 43'  
**PLATFORM HEIGHT:** 77' 5"  
**WORKING HEIGHT:** 84'  
**PLATFORM HEIGHT:** 4' 10" X 2' 6"



# MISCELLANEOUS EQUIPMENT



**DUMP TRUCKS**  
6-10 yard



**WATER TRUCKS**  
4,000 gallon tank capacity



**F150 PICKUPS**  
4 door crew cab



**PERSONNEL CARTS**  
1,200 lb - 2,000 lb capacity  
2 seat - 4 seat  
Gas, diesel and electric options  
Snow Plow & Utility Spreader Attachments



**COMPACT UTILITY EQUIPMENT**  
Toro-Dingo TX1000  
24.8 hp / 3,071 lb tip capacity  
Multiple attachments:  
Bucket, Silt Plow, Stump Grinder & Tiller



**FORK-LIFTS**  
5K LP & 5K electric  
Warehouse & Rough Terrain



### STREET SWEEPERS

Laymor 300  
24" diameter broom



### VACUUM EXCAVATORS

The LP SDT series includes a Yanmar 49-hp Tier 4 diesel engine with 1,000 cfm vacuum blower for both wet and dry applications. Manufactured on a low-profile trailer assembly for easy transport.



### DUMP TRAILERS

14,000 lb capacity  
8' x 14' tandem axle



### UTILITY/EQUIPMENT TRAILERS

1,000 lb - 12,000 lb capacity  
14' - 20' tilt deck



### GENERATORS

6kw, 25kw, 45kw, 70kw, 85kw, 125kw  
Portable and towable, spider box  
Single and three phase



### WATER TRAILERS

500 gallon tank capacity  
137 gal/min - 158 gal/min discharge



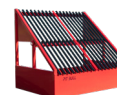
### FLOOR SWEEPERS

M20 Tennant



### HOT WATER PRESSURE WASHERS

Electro magnetic firing system, 13" flat-free tires, quick connect nozzles, 50'x3/8" steel wire braided hose, maximum outlet temperature is 200°.



### HEAVY DUTY GRIZZLY SCREENERS

Grizzly Screen 14' heavy duty adjustable bar  
Rip Rap Grizzly with 4" deck bar.



### PORTABLE SCREENING PLANTS

Pitbull 2300 Portable Screening Plant



### WOOD CHIPPERS 6", 9" & 12" CUTTING CAPACITY

Chips heavily branched material, features Vermeer-exclusive SmartFeed system.  
6", 9" and 12" cutting capacity / Gas powered



### PUMPS

Trash; 500-2,000 GPM 4" - 8"  
Submersible; 200-2,000 GPM 2" - 4"



### LIGHT TOWERS

Indoor & outdoor, stabilizers, towable



### PORTABLE AIR COMPRESSORS

185/375/400/750  
Towable, accessories available



### WELDERS

300 & 400 AMP  
4 pack, towable



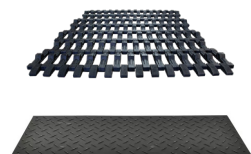
### JOBSITE HEAT SOLUTIONS

Flameless, diesel, or propane  
500,000 - 1,000,000 BTU  
6,447 CFM air output  
5.34 gal/h fuel consumption



### GROUND THAWS

2,400 sq ft - 6,000 sq ft ground thaw,  
6,000 sq ft - 18,000 sq ft concrete cure



### SITE ACCESS

10'x16' track mats  
4'x8' work pads



### SPILL CONTAINMENT BERMS

4'x8', 235 gal spill capacity  
Black polyethylene



### SHORING DEVICES

Steel and aluminum, bedding boxes,  
manhole shields, hydraulic vertical shoring



### LASERS

Trimble. Pipe, slope, rotating, with accessories



### PNEUMATIC BREAKERS

15/30/60/90,  
Electric 60



### COMPACTORS AND RAMMERS

Plate compactors, reversible plate compactors,  
remote control trench rollers  
11" shoe width / Gas powered



### CONCRETE BUGGIES

16 cu ft capacity tracked buggy



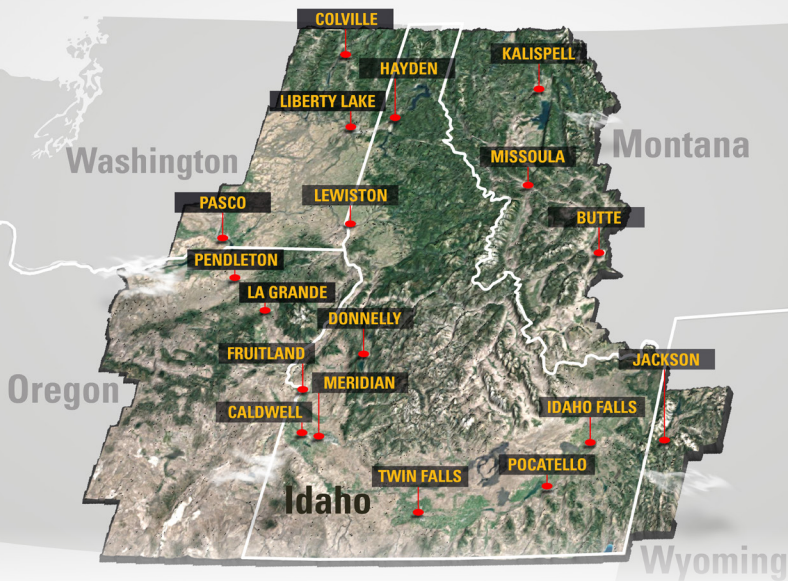
### CUT-OFF SAWS

14" blades



### FLOOR SAWS

20" blades



## IDAHO

### **CALDWELL 208-350-6334**

309 TEC Ln  
Caldwell, ID 83605

### **DONNELLY COMING SOON!**

Donnelly, ID 83615

### **FRUITLAND 208-271-7292**

6327 US-95  
Fruitland, ID 83619

### **HAYDEN 208-762-6600**

10780 US-95  
Hayden, ID 83835

### **IDAHO FALLS 208-552-3400**

1200 Foote Dr  
Idaho Falls, ID 83402

### **LEWISTON 208-298-3300**

16772 Hatwai Bypass  
Lewiston, ID 83501

### **MERIDIAN 208-884-2300**

500 E. Overland Rd  
Meridian, ID 83642

### **POCATELLO 208-235-6400**

8403 S 5th Ave  
Pocatello, ID 83204

### **TWIN FALLS 208-735-2300**

3085 Kimberly Rd  
Twin Falls, ID 83301

## MONTANA

### **BUTTE 406-494-2710**

93 Basin Creek Road  
Butte, MT 59701

### **MISSOULA 406-541-6300**

3760 N Reserve St  
Missoula, MT 59808

### **KALISPELL 406-755-3300**

3500 U.S. 93 S  
KalisPELL, MT 59901

## OREGON

### **LA GRANDE 541-963-1998**

10505 W 1st St  
La Grande, OR 97850

### **PENDLETON 541-276-5812**

607 Airport Rd  
Pendleton, OR 97801

## WASHINGTON

### **COLVILLE 509-690-5040**

1080 N Highway  
Colville, WA 99114

### **LIBERTY LAKE 509-536-1520**

20150 E Cataldo Ave  
Liberty Lake, WA 99016

### **PASCO 509-543-2200**

2100 Frontier Loop  
Pasco, WA 99301

## WYOMING

### **JACKSON 307-734-6866**

700 Roice Ln  
Jackson, WY 83001



## RAILROAD SOLUTIONS

**877-994-4228**

[westernstatescat.com/railroad-solutions](http://westernstatescat.com/railroad-solutions)