



**WESTERN  
STATES**



# CUSTOMER TRAINING CENTER



**COURSE CATALOG**

**TECHNICIAN TRAINING, SAFETY TRAINING, AND MORE**

# WESTERN STATES CUSTOMER TRAINING CENTER

## TRAINING FOR SUCCESS

The Western States training team provides world class, engaging education and coursework to ensure our customers are knowledgeable, safe, and confident in their ability to service Caterpillar machinery.

### What sets us apart:

- Engaging educators with valuable and relevant industry experience
- Unique, live, hands-on training ensures students gain new skills and knowledge and apply them safely and effectively
- Our Dealer Performance Center subscription offers over 100 web-based courses for students requiring the flexibility and convenience of e-learning
- We can also partner with you to develop customized coursework for customers needing something beyond our standard course offerings

To learn more about our standard, custom, or online course offerings, call Western States Cat at **800-852-2287**.

## COURSES

Meet the Training Team .....	3-4
Training Process & Details.....	4
Quick Pricing Guide.....	5
Service Information System (SIS).....	6
Electronic Technician (ET).....	6
Advanced Electrical.....	6
Advanced Hydraulics.....	7
Advanced Engines.....	7
Heating, Ventilation and Air Conditioning (HVAC) Operation and Diagnostics .....	8
Advanced Powertrain.....	8
Technical Analysis Inspection (TA1).....	8
Journeyman Electrical.....	8
Journeyman Hydraulics.....	9
Hydraulic Reuse.....	9
Powertrain Reuse.....	9
Tier 4 Diagnostics.....	10
Next Generation Excavator.....	10
F-Series Paver / Technical.....	10
Paving Fundamentals.....	11
Applied Failure Analysis.....	11
Master Electrical.....	11
Part 48 MSHA Training.....	12
PIT & MEWP Safe Operator Training.....	12-13
Dealer Performance Center (DPC) Subscription.....	13



Since 1956, Western State's has been providing premier Caterpillar machinery and professional services to construction, infrastructure, forestry, mining, and other clients across the Intermountain Northwestern United States. We take great pride in building our communities for a better tomorrow, and delivering effective training to our employees and clients is an integral part of that mission. We look forward to helping develop your workforce with the training and skills needed to keep your business and the world running and growing.

## » WESTERN STATE'S TRAINING TEAM



**BLAKE HARRISON** Meridian, ID  
**DIRECTOR OF TALENT DEVELOPMENT**

Blake oversees Western State's Talent Development (training team) programs and strategy including leadership, technician, safety & environmental, and other training programs. He grew up farming and ranching and worked as a technician in the mining industry early in his career. Blake possesses extensive experience in training and development. He has held several positions with Western States, most recently Safety & Environmental Training Manager. Blake's education is in Organizational Communication with graduate studies in Industrial-Organizational Psychology. Blake loves archery hunting and being a husband and father.



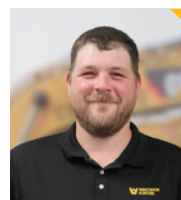
**DAYNA NEVILLE** Meridian, ID  
**TALENT DEVELOPMENT ADMINISTRATOR**

Dayna supports Western State's training team and clients by overseeing the administrative duties including managing Western States learning management system, client invoicing, scheduling, and other administrative duties. She comes from a customer-focused background where she worked in the automotive industry, commercial insurance, and staffing industry. Her favorite things to do outside of work are riding jet skis and dirt bikes with her fiancé, floating rivers with her friends, or spending time with her two dogs.



**JOSHUA JACOBSON** Pocatello, ID  
**TECHNICIAN TRAINING SUPERVISOR**

Joshua leads the diesel technician training team and has extensive experience as a diesel technician with over 20 years of industry experience with 18 of those years at a Caterpillar dealer. Prior to joining the training team, Josh has served in many roles overseeing certified Caterpillar technicians including Rebuild Center Foreman, Master Technician, and Service Manager at another Caterpillar dealer. Josh's optimism and passion for helping others learn and grow is greatly valued and appreciated. Joshua loves being a husband and father. His favorite way to unwind is fishing in the backcountry.



**ANDREW FACKLER** Meridian, ID  
**DIESEL TECHNICIAN TRAINER**

Andrew started his career as a Western States heavy equipment technician in 2007 and later graduated from the Caterpillar Think Big program. After nearly ten years as a technician, he joined the technician training team in 2017. His favorite classes to teach are the F Series Paver technical and operation classes. Outside of work, Andrew enjoys playing with his young sons, fishing, hunting, hiking and training pack goats to come along on family backpacking trips.



**BRANNON WRIGHT** Liberty Lake, WA  
**DIESEL TECHNICIAN TRAINER**

Brannon is a former dealership technician and facilitates many technician training courses. He has been with Western States as a trainer since 2016. He was introduced to the heavy equipment industry when he joined the military shortly after graduating from high school. Today, his favorite courses to teach are any of the hydraulics courses. Brannon married his high school sweetheart, and they have been married for 28 years. When he isn't working, Brannon loves to fish, paint landscapes and practice drumming (which he's done since he was 14).



**JOE JENSEN** Pocatello, ID  
**DIESEL TECHNICIAN TRAINER**

Joe brings 23 years of industry experience to the training team, with seven of those years spent as a college diesel program instructor. Before joining the training team, Joe served many Western States clients as a senior field technician. Joe is a recent and great addition to the training team as his experience and passion for sharing his knowledge with others will help those he teaches develop invaluable Caterpillar technician skills. Joe is a devoted family man who enjoys spending time with his wife and son. In his free time he enjoys horseback riding and teaching his son to hunt and fish.

## WESTERN STATE'S TRAINING TEAM



**KRISTINA BOCK** Spokane, WA  
**SPOKANE TECH ACADEMY INSTRUCTOR**

Kristina began her career in 2010 while finishing her degree in Diesel Technology. She went on to work as a technician at a small shop in Idaho before working for Western States. While at Western States she graduated the tech academy program, worked as both a technician and Service Foreman at our Twin Falls branch, and in 2018 became a Technician Trainer. She is an accredited Caterpillar instructor and today instructs the Spokane Tech Academy. As Kristina likes to put it "My career has now come full circle!" She shares a passion for the outdoors, camping, hiking, fishing, and soccer with her husband and four boys.



**PATRICK MUIR** Meridian, ID  
**MERIDIAN TECH ACADEMY INSTRUCTOR**

Patrick graduated with a degree in Diesel Technology from a vo-tech school in Nebraska before going on to work as a truck technician for the next three years. He began his Cat technician career spending over two years with a Cat dealer in Nebraska before relocating to Idaho where. At Western States Patrick has been both a technician and the Lead Technician at our Meridian Truck Shop. Patrick has a genuine passion for sharing his knowledge and mentoring less experienced technicians. Patrick enjoys spending time performing multi-day backcountry hiking challenges.



**ED CARLSON** Liberty Lake, WA  
**SAFETY & ENVIRONMENTAL TRAINING MANAGER**

Ed leads Western States Safety & Environmental training team. Ed brings over 15 years of industrial safety management and leadership experience to the training team, specializing in overhead crane safety and operation. Ed grew up logging and farming and began his career after graduating from a millwright program at North Idaho College. Ed is a skilled safety professional and instructor. Ed's focuses outside of work are working in his wood mill at home and spending time with his wife and son.



**BRIAN CHAPMAN** Pocatello, ID  
**SAFETY & ENVIRONMENTAL TRAINER**

Brian is the newest addition to Western States training team. Brian has acquired years of valuable mining experience working at a coal mine as a Certified Mine Foreman, heavy equipment operator, equipment task trainer, and safety assistant. He attended Idaho State University and graduated with a degree in communication. Brian has a passion for teaching and helping others understand their "Why". Brian is a skilled musician and family man.



**KIMBALL HARDMAN** Twin Falls, ID  
**CLIENT SERVICES TRAINER**

Kimball works with clients in the southern-region to provide forklift and aerial lift operator training. With his experience in high school education and the natural gas industry, Kimball is a knowledgeable part of the Western States team. Kimball is passionate about education and helping operators to learn to safely use their machines. Outside of work, Kimball is a track and field coach and enjoys fishing, kayaking and spending time on the range with friends.



**WADE HAMMOND** Liberty Lake, WA  
**CLIENT SERVICES TRAINER**

Wade offers OSHA certification training on forklifts, telehandlers, boom and scissor lifts in our northern territory. He joined the Western States team with over three decades of experience with equipment, sales and customer service, and is most looking forward to providing clients with an excellent training experience and helping them learn the skills they need to be safe and effective on the jobsite. In his free time, Wade and his family enjoy traveling and fishing all over the region.



## TRAINING PROCESS & DETAILS

### LOCATION

- Training can be conducted at both WSECO and client locations, so long as there are required accommodations to support classroom and lab needs.
- Training which requires overnight instructor travel will include an additional overnight travel fee of \$250 per night.

### PAYMENT

- Payment is due via credit card at the time seats are reserved and/or the class is booked.
- Cancellations within 15 days of the class will be invoiced at full price, however substitutions are allowed at no extra fee.
- Travel and lodging arrangements are the responsibility of the participant. Class fees do NOT include participant travel or lodging expenses.

### ONSITE REQUIREMENTS

- Safety toe boots, safety glasses, cut resistant gloves (Cut-3 or greater), and high visibility clothing are required at all WSE locations.
- Participants must abide by all WSE safety policies while onsite.

### CLASS SIZE & LOGISTICS

- Minimum class size requirement is 5 people or minimum class fee equivalent to 5 people.
- Some courses have slightly increased rates to cover logistic costs to ship training aids and equipment to the training site (Tier 4, Electrical, etc.)
- Snacks, drinks, and class lunches for full-day classes conducted on WSECO property are provided for registered participants at no extra charge.



## QUICK PRICING GUIDE

This pricing guide is a quick reference to some of our most popular courses. See the following pages for class descriptions and a comprehensive pricing guide.

CLASS	PRICE	DISCOUNT RATE (6 or more participants)	LENGTH
SIS/ET	\$500 per person	\$449 per person	1 day
Apprentice Electrical	\$1495 per person	\$1350 per person	3 days
Master Electrical	\$1495 per person	\$1350 per person	3 days
Tier 4 Diagnostics	\$1595 per person	\$1435 per person	3 days
Apprentice Hydraulics	\$1495 per person	\$1350 per person	3 days
Journeyman Hydraulics	\$995 per person	\$895 per person	2 days
AFA - Applied Failure Analysis	\$1495 per person	\$1350 per person	3 days
HVAC	\$1135 per person	\$1075 per person	2 days
DPC Subscription	\$1000 per person	See page 13	Annual subscription
Part 48 New Miner Surface MSHA	\$499 per person	See page 12	3 days
Part 48 Annual Refresher MSHA	\$220 per person	See page 12	1 day

## COURSE

## COST



### Service Information Systems: SIS 2.0 (1 day class taught with ET)

In 2021 Caterpillar made a large step forward with the transition from SIS web to SIS 2.0 for all parts, service, operation and maintenance documentation. SIS 2.0 has several new navigation tools available as well as an entirely new look and feel that is a significant improvement over its predecessor. This four-hour hands-on course is designed to help participants increase their knowledge and efficiency when navigating SIS 2.0. Participants will navigate through several live examples that will explore all features of the new system. To conclude the class, there is a challenging exercise to verify that all learners can find key information that is available in SIS 2.0. This class is great for technicians, parts personnel and anyone else that needs to access Caterpillar documentation.

#### Learning Outcomes

- » What information is available in SIS 2.0
- » How to efficiently find Parts, Service, Operation and Maintenance information
- » Differences between SIS web and SIS 2.0

**\$500\***  
per person



### Electronic Technician (ET) (1 day class taught with SIS 2.0)

Caterpillar Electronic Technician (ET) is a vital tool for working with any Caterpillar equipment built in the last 20+ years. The knowledge and skills required to use ET to its full capability for troubleshooting, configuration changes and calibrations is even more important than the tool itself. This four-hour hands-on course is designed to build participants confidence and efficiency when working in ET. The class concludes with a hands-on exercise that will challenge the participants to find a variety of information on live machines to verify they can efficiently connect and utilize Cat ET.

#### Learning Outcomes

- » What information and tools are available within ET
- » How to efficiently navigate and utilize ET
- » How to connect to a machine using the Communications Adapter 3

**\$500\***  
per person

**\*Taught in a 1-day class with SIS 2.0 and ET combined.**

**\*Minimum class size: 5 people or class fee equivalent to 5 people**

**\*Group discount rate for clients who have 6 or more participants: \$449 per person**

**\*Training which requires overnight instructor travel includes an additional \$250 per day**



### Apprentice Electrical (3 day class)

As heavy equipment electrical systems have become more and more advanced, the need for a technician that is confident and accurate when troubleshooting electrical problems has become more important than ever. Our Advanced Electrical Training is a fast paced and challenging three-day class that will form a strong foundational understanding of electrical concepts and how they relate to modern equipment.

The hands-on approach of our training will constantly task the participants with building electrical circuits, and properly testing them using correct procedures. Concepts covered include reading and understanding electrical schematics, basic circuit function, operating and reading a multimeter, and using it as a tool to diagnose multiple types of faults. There is a strong emphasis on using voltage drop techniques to properly diagnose live circuit faults, as well as in-depth instruction on relay operated circuits.

#### Learning Outcomes

- » Understand electrical theory and how it applies to heavy equipment
- » Understand basic electrical component operation, troubleshooting and repair
- » Proper operation of multimeter and understanding of readings

**\$1,495\***  
per person

**\*Minimum class size: 5 people or class fee equivalent to 5 people**

**\*Group discount rate for clients who have 6 or more participants: \$1,350 per person**

**\*Training which requires overnight instructor travel includes an additional \$250 per day**

## COURSE

## COST



### Apprentice Hydraulics (3 day class)

Heavy equipment is becoming more advanced every year. Understanding the fundamentals of hydraulics has never been more important. Machine implement hydraulics, truck PTO hydraulics, steering systems, brake circuits, transmission control circuits, cooling systems, and pneumatic systems all become easier to understand and troubleshoot if the technician can apply the fundamentals of hydraulics. This non-manufacturer specific, three-day class focuses on hydraulic safety throughout, as well as building knowledge of hydraulic theory and the operation of all major hydraulic components including gear, piston, and vane pumps; pressure and directional control valves; and cylinders and motors. Participants will also perform a fitting identification exercise that will help them quickly recognize an assortment of commonly used fitting types. A large amount of time is also dedicated to ensuring participants fully understand how to read hydraulic schematics and utilize them for troubleshooting.

**\$1,495\***  
per person

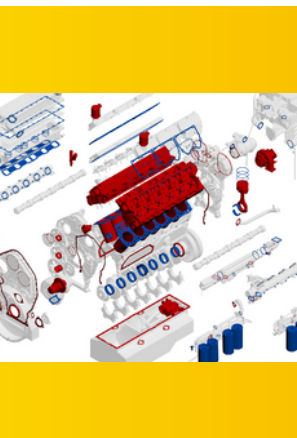
#### Learning Outcomes

- » Thorough understanding of hydraulic safety, theory and principles
- » Ability to identify all major hydraulic components and an in-depth understanding of their operation
- » Understanding how to read hydraulic schematics and use them for troubleshooting

**\*Minimum class size: 5 people or class fee equivalent to 5 people**

**\*Group discount rate for clients who have 6 or more participants: \$1,350 per person**

**\*Training which requires overnight instructor travel includes an additional \$250 per day**



### Apprentice Engines (2 day class)

Heavy equipment engines have become increasingly more complex in recent years in order to meet stringent emissions standards. In order to effectively troubleshoot these, or even older, much simpler engines, a basic understanding of the diesel engine and all of its systems and their operation is critical for successful troubleshooting. This two-day class will accomplish all of this as well as develop skills for basic troubleshooting and testing techniques.

**\$995\***  
per person

#### Learning Outcomes

- » Ability to identify and describe operation of basic engine components and systems
- » Understanding of basic troubleshooting techniques and tests
- » Understanding of proper engine servicing and adjusting procedures

**\*Minimum class size: 5 people or class fee equivalent to 5 people**

**\*Group discount rate for clients who have 6 or more participants: \$895 per person**

**\*Training which requires overnight instructor travel includes an additional \$250 per day**



### Heating, Ventilation and Air Conditioning (HVAC) Operation and Diagnostics (2 day class)

The large temperature variations that we see in our territory between the peak of summer and the lows of winter makes the HVAC system just as important as any other machine system when it comes to keeping the machine and operator productive and safe. This two-day class utilizes several live demonstrations as well as hands on parts identification and live troubleshooting labs on both the heating and air conditioning systems to increase a technician's ability to efficiently troubleshoot operator complaints caused by electrical, mechanical and air flow issues in the HVAC system.

**\$1,195\***  
per person

#### Learning Outcomes

- » Understand fundamentals of how heating and air conditioning systems function
- » Develop understanding of purpose and function of all major HVAC components
- » Understand how to service and troubleshoot heating and air conditioning systems

**\*Minimum class size: 5 people or class fee equivalent to 5 people**

**\*Group discount rate for clients who have 6 or more participants: \$1,075 per person**

**\*Training which requires overnight instructor travel includes an additional \$250 per day**

## »» TECHNICIAN CLASSES: LEVEL 1

### COURSE

### COST



#### Apprentice Powertrain (2 day class)

Caterpillar is known for their heavy duty and rebuildable powertrain components that keep the dirt moving for tens of thousands of hard hours over the life of a machine. Powertrain repairs are rarely inexpensive or quick, so an accurate diagnosis of powertrain components is critical. This makes a basic understanding of power flow, transmission and hydraulic systems, and powertrain fundamentals very important for the technician tasked with solving these problems. This two-day class will cover all of this and more to help increase the efficiency and accuracy of the technician.

**\$995\***  
per person

##### Learning Outcomes

- » Understanding of powertrain fundamentals and power flow
- » Ability to identify and explain operation of all powertrain components
- » Ability to properly diagnose and service powertrain components

**\*Minimum class size: 5 people or class fee equivalent to 5 people**

**\*Group discount rate for clients who have 6 or more participants: \$895 per person**

**\*Training which requires overnight instructor travel includes an additional \$250 per day**

## »» TECHNICIAN CLASSES: LEVEL 2



#### Technical Analysis Inspection (TA1) (1 day class)

The Cat Inspect App is another great digital tool from Caterpillar targeted at technicians and operators that allows them to efficiently complete consistent, thorough machine TA1 inspections. Unplanned machine downtime can be significantly reduced by completing regular visual TA1 inspections. This one-day workshop will guide the participants on how to not only navigate the Cat Inspect app but also how to complete a quality TA1 inspection. To complete the class, all participants will conduct their own TA1 inspections that will be reviewed so that the strengths and any potential room for improvement can be discussed.

**\$500\***  
per person

##### Learning Outcomes

- » Why quality, thorough inspections are vital to machine uptime
- » How to download and utilize the Cat Inspect App
- » How and why to take plenty of clear pictures to insert into the inspection
- » What to look for when completing an inspection and common areas of wear

**\*Minimum class size: 5 people or class fee equivalent to 5 people**

**\*Group discount rate for clients who have 6 or more participants: \$449 per person**

**\*Training which requires overnight instructor travel includes an additional \$250 per day**



#### Journeyman Electrical (3 day class)

Troubleshooting ECM inputs and outputs can be very challenging and frequently leads to diagnostic codes being misdiagnosed and the incorrect parts being replaced. This three-day class will give participants plenty of hands-on time to explore how a variety of analog and digital sensors, solenoids, switch circuits and ECMs function, as well as how to troubleshoot each of them efficiently and accurately. Once a basic understanding of these circuits is established, the participants will be challenged with hands-on troubleshooting of failed sensors, harness opens and shorts and even a failed ECM on a live C15 electrical system.

**\$1,495\***  
per person

##### Learning Outcomes

- » Understanding of how all sensor types function and their output signals
- » Understanding of how all outputs are controlled and operate
- » Increased confidence and efficiency when troubleshooting electronic inputs, harnesses and ECMs

**\*Minimum class size: 5 people or class fee equivalent to 5 people**

**\*Group discount rate for clients who have 6 or more participants: \$1,350 per person**

**\*Training which requires overnight instructor travel includes an additional \$250 per day**

## COURSE

## COST



### Journeyman Hydraulics (2 day class)

A majority of Caterpillar equipment uses either Load Sensing, Pressure Compensated (LSPC), Proportional Priority, Pressure Compensated (PPPC) or hydrostatic hydraulic systems to allow the operator to have fine control of the speed and power of all circuits in the machines' implement and travel hydraulic systems. While the basic parts of these systems are simple, when it comes to troubleshooting one of these systems, a technician without the opportunity to study these systems in-depth will typically struggle to accurately recognize the failed part in a timely manner. This two-day class not only takes a deep dive into the operation of both systems, but also explores the evolution and "why" hydraulic systems have progressed from older, inefficient, simple systems to the modern LSPC and PPPC systems widely used in equipment today.

**\$995\***  
per person

#### Learning Outcomes

- » Have the ability to identify a LSPC or PPPC by looking at a hydraulic system schematic
- » Have the ability to identify all LSPC and PPPC components and their operation
- » Thorough understanding of LSPC, PPPC and Hydrostatic hydraulic systems
- » In depth comprehension of how a variable displacement piston pump compensator functions

**\*Minimum class size: 5 people or class fee equivalent to 5 people**

**\*Group discount rate for clients who have 6 or more participants: \$895 per person**

**\*Training which requires overnight instructor travel includes an additional \$250 per day**



### Hydraulic Reuse (2 day class)

The option to rebuild all major components on Caterpillar equipment is what has set them apart from other equipment manufacturers in owning and operating costs. Making accurate internal part reusability decisions is key to avoiding midlife component failures and keeping rebuild costs as low as possible. Built from the experience of rebuilding thousands of hydraulic components, this two-day class is designed to help technicians make those decisions accurately and efficiently with several hands-on examples of parts that would and wouldn't meet reusability guidelines.

**\$995\***  
per person

#### Learning Outcomes

- » Efficiently differentiate between reusable and non-reusable parts
- » Understand what makes a part non reusable and how the wear will progress
- » Understanding of how to get as much life out of a part as possible to reduce costs

**\*Minimum class size: 5 people or class fee equivalent to 5 people**

**\*Group discount rate for clients who have 6 or more participants: \$895 per person**

**\*Training which requires overnight instructor travel includes an additional \$250 per day**



### Powertrain Reuse (2 day class)

The option to rebuild all major components on Caterpillar equipment is what has set them apart from other equipment manufacturers in owning and operating costs. Making accurate internal part reusability decisions is key to avoiding midlife component failures and keeping rebuild costs as low as possible. Built from the experience of rebuilding thousands of powertrain components, this two-day class is designed to help technicians make those decisions accurately and efficiently with several hands-on examples of parts that would and wouldn't meet reusability guidelines.

**\$995\***  
per person

#### Learning Outcomes

- » Efficiently differentiate between reusable and non-reusable parts
- » Understand what makes a part non-reusable and how the wear will progress
- » Understanding of how to get as much life out of a part as possible to reduce rebuild costs

**\*Minimum class size: 5 people or class fee equivalent to 5 people**

**\*Group discount rate for clients who have 6 or more participants: \$895 per person**

**\*Training which requires overnight instructor travel includes an additional \$250 per day**

## COURSE

## COST

### Tier 4 Diagnostics (3 day class)

The off-road diesel tier 4 emissions that were rolled out in 2008 brought with them several new systems that are now commonplace on all modern diesel engines. This three-day class focuses on the C9.3, C13, C15, C18, C27 and C32 group of engines and will increase the confidence and accuracy of technicians when troubleshooting these systems. Participants will be challenged with hands-on parts identification exercises as well as live troubleshooting labs on the NRS, Fuel, DPF and SCR systems on our C9.3 training engine.

**\$1,595\***  
per person

#### Learning Outcomes

- » Ability to identify all tier 4 specific components and their function
- » Confidence in efficiently troubleshooting tier 4 specific engine systems
- » Knowledge of proper repair and service procedures available to keep equipment operating

**\*Minimum class size: 5 people or class fee equivalent to 5 people**

**\*Group discount rate for clients who have 6 or more participants: \$1,435 per person**

**\*Training which requires overnight instructor travel includes an additional \$250 per day**

### Next Generation Excavator (3 day class)

Caterpillar's introduction of Next Generation hydraulic excavators (HEX) in 2019 revolutionized the excavator market and are continuing to evolve to this day. This Next Gen HEX course is specific to those excavators and covers a wide range of models from the 301.5 to the 352. This three-day class is broken into three segments: mini, medium and large excavators. This is a technical course and focuses, in depth, on the Next Gen HEX's electrical and hydraulic architecture specific to these machines. The content will include ease-of-use features, ethernet circuits, monitor capabilities, calibrations and data input. Participants will identify and locate Next Gen components; test, adjust and calibrate electrohydraulic components; and learn to understand and utilize the hydraulic and electronic schematics. Labs, exercises and hands-on will be incorporated to strengthen comprehension of the class content.

**\$1,495\***  
per person

#### Learning Outcomes

- » Identify components specific to the Next Gen excavators
- » Understand the hydraulic and electronic architecture utilized by the Next Gen Excavator
- » Understand how to measure, test, adjust and calibrate Next Gen systems and components
- » Understand schematic layouts to assist in troubleshooting

**\*Minimum class size: 5 people or class fee equivalent to 5 people**

**\*Group discount rate for clients who have 6 or more participants: \$1,350 per person**

**\*Training which requires overnight instructor travel includes an additional \$250 per day**

### F Series Paver / Technical (4 day class)

The paving world has always been a demanding and quickly evolving industry. The Cat F Series Pavers were built to meet the challenges of being highly productive but still flexible by making some big strides in technology. This four-day training will take an extensive deep dive into each individual system on the F series pavers as well as the SE series screeds. Participants will be challenged with a hands-on parts identification and live troubleshooting lab on each of the paver's systems including propel, material feed, vibratory, hydraulics, cooling, electrical and screed heat systems.

**\$1,995\***  
per person

#### Learning Outcomes

- » Ability to locate, identify and explain operation of all components of each of the F series paver systems
- » Gain the confidence to be able to quickly and accurately troubleshoot issues and operator complaints
- » Understand all overrides and service procedures available to keep the job moving when down time is not an option

**\*Minimum class size: 5 people or class fee equivalent to 5 people**

**\*Group discount rate for clients who have 6 or more participants: \$1,795 per person**

**\*Training which requires overnight instructor travel includes an additional \$250 per day**



## » TECHNICAL CLASSES: LEVEL 2

### COURSE

### COST



#### **Paving Fundamentals** (3 day class)

Learning what it takes to properly operate a paver is easily more complicated than just about any other type of construction equipment. This three-day class is targeted to technicians but is great for anyone in the paving industry looking to learn more about the basics or more specifically about the operation of F Series Pavers. This class will give participants a great head start by challenging them to lay several sand mats to the correct specifications both with and without the use of grade control.

**\$1,495\***  
per person

##### **Learning Outcomes**

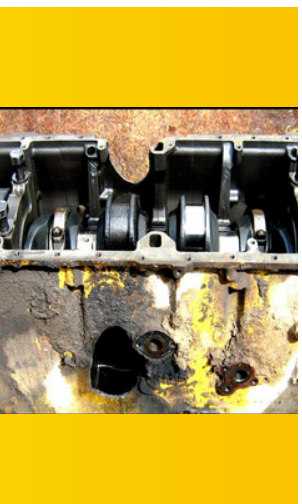
- » Understanding of all F series tractor and screed controls and their proper use and application
- » Understanding of paving fundamentals and what will affect ride or matt quality
- » How to properly set up and use the integrated Cat Grade Control on the F Series Pavers
- » How to properly check and set all adjustments on the SE Series of screeds

**\*Minimum class size: 5 people or class fee equivalent to 5 people**

**\*Group discount rate for clients who have 6 or more participants: \$1,350 per person**

**\*Training which requires overnight instructor travel includes an additional \$250 per day**

## » TECHNICAL CLASSES: LEVEL 3



#### **Applied Failure Analysis (AFA)** (3 day class)

Low hour or repeat part failures are always unexpected and rarely inexpensive. Applied Failure Analysis is the process of finding and resolving the true root cause of a failure in these situations. Participants will learn how to utilize the AFA process to assemble the facts so we can understand how and why a part failed by identifying fracture and wear types to find the most probable root cause while avoiding preconceived ideas or bias. The three-day AFA 1 has participants complete a hands-on failure analysis of several engine failure types but the fundamentals learned in this class also apply to a large variety of components.

**\$1,495\***  
per person

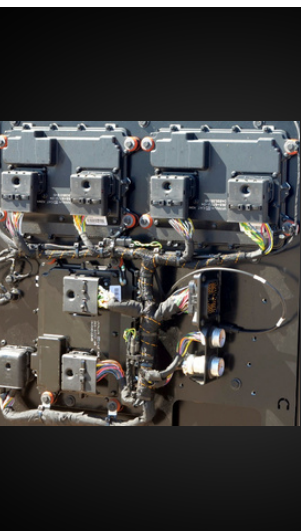
##### **Learning Outcomes**

- » Understanding of the Failure Analysis process and how to utilize and manage it
- » How to identify different wear and fracture types as well as what they mean
- » Understanding of basic metallurgy and how to identify and explain a metallurgical failure

**\*Minimum class size: 5 people or class fee equivalent to 5 people**

**\*Group discount rate for clients who have 6 or more participants: \$1,350 per person**

**\*Training which requires overnight instructor travel includes an additional \$250 per day**



#### **Master Electrical** (3 day class)

As heavy equipment becomes more and more technologically advanced, so do their electrical systems. With an increasing number of ECM's and sensors connected to a machine's communication network, there is a growing opportunity for CAN, CDL and Ethernet diagnostic codes that can be very difficult to troubleshoot. This three-day, hands-on course will give participants an increased level of understanding and confidence to accurately diagnose these network faults. They will have the opportunity to not only learn how the networks function but will also get the chance to practice what they learned on several live troubleshooting labs that are based upon real world failures seen in a variety of applications.

**\$1,495\***  
per person

##### **Learning Outcomes**

- » Understanding of how CDL, CAN and Ethernet function and communicate
- » Confidence in accurately troubleshooting all types of network faults or issues
- » How to properly repair found faults to avoid machine downtime in the future

**\*Minimum class size: 5 people or class fee equivalent to 5 people**

**\*Group discount rate for clients who have 6 or more participants: \$1,350 per person**

**\*Training which requires overnight instructor travel includes an additional \$250 per day**

## COURSE

## COST



### Part 48 MSHA New Miner Training - Surface (3 day class)

All MSHA training is not created equal since most MSHA training gets a bad reputation for being boring and outdated. Our MSHA training is delivered with a customized program that engages new miners in not only receiving federally required MSHA certification, but also making the training worthwhile, engaging, and very informative for technicians and miners new to the mining industry. This training is conducted virtually.

**\$499\***  
per person

#### Learning Outcomes

- » Understand the basics of mining practices and operations
- » Understanding important factors of staying alive at a mine-site
- » How to avoid getting a citation from MSHA
- » Obtain a thorough understanding of risks and strategic methods of safely working around powered haulage, conveyors, heavy machinery, blasting operations, highwalls, and other mining hazards

**\*Minimum class size: 5 people or class fee equivalent to 5 people**

**\*Group discount rate for clients who have 8 or more participants: \$449 per person**



### Part 48 MSHA Annual Refresher Training - Surface (1 day class)

All MSHA training is not created equal since most MSHA training gets a bad reputation for being boring and outdated. Our MSHA training is delivered with a customized program that engages experienced miners in not only renewing their MSHA certification, but also making the training worthwhile, engaging, and very informative for technicians and miners familiar with and experienced in mining. Our MSHA training is led by mining industry experienced educators who know the dynamics of what it is to be a miner. This training is conducted virtually.

**\$225\***  
per person

#### Learning Outcomes

- » Understand the basics of mining practices and operations
- » Understanding important factors of staying alive at a mine-site
- » How to avoid getting a citation from MSHA
- » Obtain a thorough understanding of risks and strategic methods of safely working around powered haulage, conveyors, heavy machinery, blasting operations, highwalls, and other mining hazards

**\*Minimum class size: 10 people or class fee equivalent to 10 people**

**\*Group discount rate for clients who have 11 or more participants: \$199 per person**

## » OPERATOR CLASSES



### Powered Industrial Truck (PIT) Safe Operator Training (1 day class)

Federal and state regulations require employers to certify forklift operators and ensure they have received initial mandatory training and instruction, including passing a practical hands-on evaluation prior to operating the forklift for work. This certification is valid for 36 months. Training records must be maintained by the employer. Our one-day program includes the core forklift classroom instruction, student workbooks, written knowledge checks verifying comprehension, fundamental practical operating evaluation, proof of training ID card (valid for 36 months), and copies of all training and evaluation documents for employer record retention.

**\$150**  
per person

#### Learning Outcomes

- » Understand all instructions, warnings, decals and precautions
- » Recognize location and function of all controls
- » Competent in steering, maneuvering, and adjusting for restricted visibility
- » Knowledgeable in forklift capacity and stability ratings
- » Properly conduct pre-shift and site-specific inspections



#### Train-The-Trainer Option

Available for clients interested in training someone who can teach it to other members of their company.

**\$1,000**  
per person

## COURSE

## COST



### Mobile Elevating Work Platform (MEWP) Safe Operator Training (1 day class)

Federal and state regulations require employers to ensure mobile elevating work platform operators have received initial training, instruction, familiarization and evaluation on the safe use of the equipment. They must understand their responsibilities and be re-trained if necessary based on the employer's observations and evaluation of the operator. Training records must be maintained by the employer. Our one day program includes the core MEWP classroom instruction, student workbooks, written knowledge checks verifying comprehension, donning-doffing-fit-use of applicable personal fall protection equipment, fundamental practical operating evaluation, proof of training ID card (valid for 36 months), copies of all training and evaluation documents for employer record retention.

**\$150**  
per person

#### Learning Outcomes

- » Understand proper terminology used with various types of mobile elevating work platforms
- » Be able to identify the correct aerial platform to use for various applications
- » Understand the operator's responsibility regarding safe use and operations of aerial platforms
- » Develop safe operating practices when using mobile elevating work platforms
- » Know the five principles of safe machine operation



#### Train-The-Trainer Option

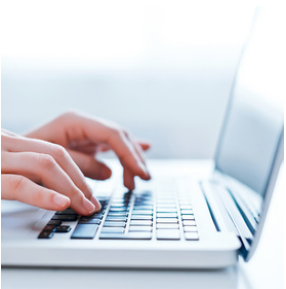
Available for clients interested in training someone who can teach it to other members of their company.

**\$1,000**  
per person

## » DIGITAL E-LEARNING CLASSES

## COURSE

## ANNUAL COST



### Dealer Performance Center (DPC) Subscription

A subscription to the Dealer Performance Center provides access to a learning catalog of hundreds of digital classes ranging from technical training, to safety training, to operator training, to leadership training.

**\$5,000**  
up to 5  
individuals

**\$7,500**  
up to 10  
individuals

**\$10,000**  
up to 15  
individuals



# **CUSTOMER TRAINING CENTER**

**800-852-2287**

**[WesternStatesCat.com](http://WesternStatesCat.com)**