



# RAILROAD SOLUTIONS

**SAFETY • SALES • RENTAL • PARTS • SERVICE**



**877-994-4228**

[westernstatescat.com/railroad-solutions](http://westernstatescat.com/railroad-solutions)

# CONTENTS

<b>CAT® EQUIPMENT</b>	<b>PAGE</b>
Hi-Rail Excavators, Available Attachments	<b>4,5</b>
Backhoes, Wheel Loaders	<b>6</b>
Miscellaneous Hi-Rail Gear	<b>7</b>
Compact Track Loaders, Skid Steer Loaders	<b>8</b>
Dozers, Asphalt and Soil Compactors	<b>9</b>
Mini Excavators	<b>10</b>
Excavators	<b>11</b>

<b>TELEHANDLERS</b>	
Telehandlers, Backhoe Loaders, Skip Loaders	<b>12</b>
Compact Wheel Loaders, Wheel Loaders, Motor Graders	<b>13</b>

<b>MISCELLANEOUS EQUIPMENT</b>	
Dump Trucks, Water Trucks, F150 Pickups, Personnel Carts, Fork-lifts, Vacuum Excavators	<b>14</b>
Dump Trailers, Utility/Equipment Trailers, Generators, Wood Chippers, Pumps, Light Towers, Portable Air Compressors	<b>15</b>
Jobsite Heat Solutions, Ground Thaws, Site Access, Spill Containment Berms	<b>16</b>

# OUR VALUE TO YOU

## DEDICATED RAIL TEAM

Our experienced Sales, Rental, Service and Parts team is ready to assist your operation with everything from initial consultation to equipment sales and rental, plus on-site product introduction and operator training.

## HI-RAIL ASSEMBLY

Our Hi-Rail Assembly Team is committed to the development, installation and maintenance of effective Hi-Rail equipment and rail-specific attachments.

## DERAILMENT RESPONSE TEAM

In an emergency, you need help quickly. Our Derailment Response Team provides a 24-hour response to emergencies and is ready to support on-site as needed.

## ON-SITE TEST TRACK

We use an on-site test track for annual inspections, as well as for testing our Hi-Rail equipment before we send it into the field.

## FIELD SERVICE

With access to the Caterpillar dealer network, we have dedicated field technicians ready to provide a timely response and solutions to issues when and where they arise.

## CAT® RENTALS APP

# EQUIPMENT RENTALS SIMPLIFIED

Download The Cat® Rentals App Today  
To Manage Your Equipment In Real Time.



## MANAGE YOUR EQUIPMENT RENTALS ANYTIME, ANYWHERE.

With the app you can:

- Transfer equipment between job sites
- Extend or call-off rentals
- Message our team directly
- View contracts and invoices
- Request quotes
- Request service
- View rental rates
- 24/7 access

# VISIONLINK

Track your fleet from anywhere with the free VisionLink app.

## WITH THE VISIONLINK APP YOU GET:

- Real-time fleet visibility
- Proactive maintenance
- Improved productivity
- Control over operating costs
- Easy access anywhere



## HI-RAIL EXCAVATORS



Model	Approx. Net Power	Approx. Operating Weight	Approx. Max Reach/Depth	Thumb/Coupler
308 Hi-Rail	70 hp	29,000 lbs	20' / 12.5'	Cat Pin, Grabber, Thumb
<b>Attachments »</b> Tie Picker, Tie Inserter, Tamper, TRS, Cribbing Bucket, Mulcher, Thumb/Coupler				
310 Hi-Rail	70.3 hp	30,000 lbs	25' 1" / 17' 1"	Roto-tilt
<b>Attachments »</b> 360 Roto Coupler, Graptor Bucket, Tie Inserter, Brush Cutter, Cold Air Blower, 20T Grapple, Tamper, 6' Undercutter, Snow Blower				
312 Hi-Rail	90 hp	45,300 lbs	28' 3" / 19' 8"	Roto-tilt
<b>Attachments »</b> 360 Roto Coupler, Graptor Bucket, Tie Inserter, Tamper, Culvert Cleaner, Cold Air Blower, Tinbin Vacuum, 8' Clean-up Blade, Field Mower, Brush Mower, 20T Grapple, Magnet, Snow Blower, Tie Pick				
315 Hi-Rail	110hp	46,000 lbs	29'/19'	Roto-tilt
<b>Attachments »</b> 360 Roto Coupler, Graptor Bucket, Tie Inserter, Tamper, Culvert Cleaner, Cold Air Blower, Tinbin Vacuum, 8' Clean-up Blade, Field Mower, Brush Mower, 20T Grapple, Magnet, Snow Blower, Advanced Implement Control, Tie Pick, Rail Cart				
320 Hi-Rail	153 hp	76,000 lbs	32' 3" / 22' 0"	Roto-tilt
<b>Attachments »</b> 360 Roto Coupler, Graptor Bucket, Tie Inserter, Tamper, 12' Undercutter Bar, Panel Boss, 20T Grapple, Culvert Cleaner, Cold Air Blower, Tinbin Vacuum, 8' Clean-up Blade, Rail Cart, Ballast Broom, Brush Cutter, Snow Blower, Tie Picker, Grapple saw, Field Mower, AMI Bucket, Magnet, Skid Steer Adapter				
325 Hi-Rail	174 hp	76,000 lbs	32' 1" / 22' 0"	Roto-tilt
<b>Attachments »</b> 360 Roto Coupler, Graptor Bucket, Tie Inserter, Tamper, 12' Undercutter Bar, Pile Driver, Panel Boss, 20T Grapple, Culvert Cleaner, Cold Air Blower, Tinbin Vacuum, 8' Clean-up Blade, Rail Cart, Ballast Broom, Brush Cutter, Snow Blower, Tie Picker, Grapple saw, Field Mower, AMI Bucket, Advanced Implement, Control, Magnet, Skid Steer Adapter, Cat Pin Grabber/Thumb				

## AVAILABLE ATTACHMENTS



**Pile Drivers**



**Tie Inserters**



**Tampers**



**Brush Cutters**



**Cold Air Blowers**



**Tinbin Vacuums**



**Undercutter Bars**



**Grapples**



**Ballast Brooms**



**8' Clean-up Blades**



**Rail Carts**



**Panel Boss**



**Magnets**



**Certified Lifting Devices**



**Snow Blowers**



**Tie Pickers**



**Jaw Bones**



**Excavator to SS Adapters**



**Grapple Saws**



**Mulchers**



## BACKHOES - Rail Fleet

Model	Approx. Net Power	Approx. Operating Weight	Approx. Depth Standard/Extended	Thumb/Coupler
420 4WD IT	93 hp	24,000 lbs	19' 9" / 12 '8"	Yes

**Attachments »** 8" Cribbing Bucket, Thumb, Aux. Hydraulics, Tie Inserter, Tamper, Rail Rider (Hi-Rail), Forks, Hydraulic Deploy Gear



**Cribbing Buckets**



**Thumbs**



**Tampers**



**Tie Inserters**



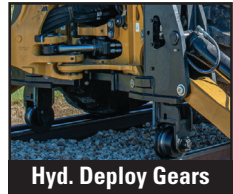
**Aux. Hydraulics**



**Rail Riders (Hi-Rail)**



**Forks**



**Hyd. Deploy Gears**



## WHEEL LOADERS - Rail Fleet

Model	Approx. Net Power	Approx. Operating Weight	Approx. Bucket Capacity	Coupler
950	230 hp	46,000 lbs	3.75 - 5.75 yds	Yes

**Attachments »** Offset Wheels, Material Arm, Bucket, 8' Forks

972	299 hp	57,100 lbs	3.75 - 13.0 yds	Yes
-----	--------	------------	-----------------	-----

**Attachments »** Offset Wheels, Material Arm, Bucket, 8' Forks



**Offset Wheels**



**Material Arms**



**Buckets**



**Forks**

# MISC. HI-RAIL GEAR



## HI-RAIL ROTARY DUMP TRUCKS

18,000 lb. GVWR Front Axle. 40,000 lb. GVWR Rear Axle. 178" Wheel Base. Pintle hitch. Full Air Brakes. 80 Gallon Fuel Tank. Manual Rail Dogs for dumping. 14' Dump Box.



## HI-RAIL GRAPPLE TRUCKS

Front Axle 20,000 lb. GVWR Front Axle. 46,000 lb. GVWR Rear Axle. 255" Wheelbase. 470 HP DD 13 12.8L Diesel Engine. Pintle hitch. 80 \ Gallon Fuel Tank. 22' boom with 3' hydraulic extension. ESM-HP 30" Magnet. Creep Drive (as option).



## HI-RAIL ROTARY DUMP TRUCKS WITH WATER TANK

4,000 gallon tank.



## RAIL CARTS

18 foot solid floor. Brakes available. 80,000 lb GVWR. 14 foot pintle hitch. Front and rear hitch.



## HI-RAIL TRAILERS

Available in powered 20T.  
20T approx. operating weight is 11,750 lbs and carries 320-325 non Hi-Rail excavators.



## 90K TRAILER/MACHINE MOVER FOR ON-TRACK

90K Capacity. Self-propelled. Remote control available.



## HI-RAIL PICKUPS



## COMPACT TRACK LOADERS

Model	Approximate Net Power	Approximate Operating Weight	Approximate Operating Capacity
239	67.1 hp	7,434 lbs	1,530 lbs
249	67.1 hp	7,831 lbs	1,740 lbs
255 (previously 259D3)	74.3 hp	9,578 lbs	2,499 lbs
265 (previously 279D3)	74 hp	10,492 lbs	2,823 lbs
289	74.3 hp	10,688 lbs	2890 lbs
275 (previously 299D3)	111 hp	12,401 lbs	4,156 lbs



## SKID STEER LOADERS

Model	Approximate Net Power	Approximate Operating Weight	Approximate Operating Capacity
226	67.1 hp	5,849 lbs	1,550 lbs
236	74.3 hp	6,567 lbs	1,800 lbs
250 (previously 246D3)	74 hp	7,829 lbs	2,689 lbs
260 (previously 262D3)	74 hp	8,523 lbs	3,160 lbs

### AVAILABLE ATTACHMENTS



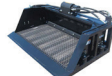
AUGERS



BROOMS



BUCKETS: General purpose, screening, grapple



CAT 44 GAL WATER TANKS



COLD PLANER



COMPACTORS



DOZER BLADES



FORKS



8' GRADER BLADES



HARLEY / BOX RAKES



HAY FORKS



HYDRAULIC HAMMERS



MOWER DECKS



PICKUP BROOMS

## AVAILABLE ATTACHMENTS CONTINUED



**POST DRIVERS**



**ROCK PICKERS /  
LANDSCAPE RAKES**



**ROCK ROLLERS**



**ROTARY TILLERS**



**SILT FENCE PULLERS**



**SNOW BLOWERS**



**4 IN 1  
SNOW PLOW**



**SNOW PLOWS**



**SPREADERS**



**TRENCHERS**



**TRIMBLE  
TECHNOLOGY PACKAGES**



## DOZERS

Model	Approximate Net Power	Approximate Operating Weight	Blade
D1 (previously D3K2)	80 hp	17,544 lbs	VPAT
D3 (previously D5K2)	104 hp	20,534 lbs	VPAT
D4 (previously D6K2)	130 hp	29,258 lbs	VPAT
D5 (previously D6N)	166 hp	36,943 lbs	VPAT



## ASPHALT AND SOIL COMPACTORS

Model	Type	Approximate Net Power	Approximate Operating Weight	Drum Width
CB2.5GC	smooth double drum	24.6 hp	5,546 lbs	39"
CB2.7	smooth double drum	48.2 hp	5,936 lbs	47"
CB34	smooth double drum	49 hp	8,155 lbs	51"
CB36	smooth double drum	49 hp	8,385 lbs	55"
CS-323/CS34	single smooth drum	74 hp	9,799 lbs	50"
CS44/CS7	single smooth drum	99.8 hp	16,276 lbs	66"
CS54/CS11	single smooth drum	120.7 hp	24,775 lbs	84"
CP-323/CP34	pad foot	74 hp	11,000 lbs	50"
CP44	pad foot	100.6 hp	15,935 lbs	66"
CP54B	pad foot	132.8 hp	24,096 lbs	84"



## MINI EXCAVATORS

Model	Approximate Net Power	Approximate Operating Weight	Approx. Max Reach/Depth	Thumb/Coupler
301.7	19.2 hp	4,068 lbs	12' 2" / 7' 3"	X
302.7	20.7 hp	6,239 lbs	14' 8" / 8' 4"	X
303	23.5 hp	7,204 lbs	15' 9" / 9'	X
303.5	23.5 hp	8,209 lbs	17' 6" / 10' 4"	X
304	40.2 hp	8,996 lbs	18' 0" / 11' 3"	X
305	40.2 hp	11,443 lbs	19' 1" / 12' 0"	X
305.5	44.1 hp	11,958 lbs	19' 9" / 12' 8"	X
306	55.9 hp	15,766 lbs	20' / 12' 10"	X
307	50.6 hp	16,030 lbs	20' 3" / 13' 4"	X
308	65 hp	20,678 lbs	24' 1" / 15' 5"	X
310	70.3 hp	22,447 lbs	25' 1" / 17' 1"	X

### AVAILABLE ATTACHMENTS



**36" FORESTRY RAKES**  
(For 308 model only)



**AUGERS**  
(Not available for 307/308)



**BUCKETS**



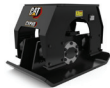
**COMPACTION WHEELS**



**HYDRAULIC HAMMERS**



**RIPPERS**



**VIBRATORY COMPACTORS**



## EXCAVATORS

Model	Approximate Net Power	Approximate Operating Weight	Approx. Max Reach/Depth	Thumb/Coupler
313	90 hp	29,100 lbs	28' 3" / 19' 8"	X
315	113 hp	37,920 lbs	28' 6" / 19' 6"	X
316	113 hp	37,920 lbs	30' 5" / 21' 7"	X
317	130 hp	40,000 lbs	29' 7" / 21' 7"	X
320	153 hp	48,281 lbs	32' 3" / 22' 0"	X
323	161 hp	56,860 lbs	32' 4" / 22' 1"	X
325	161 hp	57,100 lbs	32' 1" / 22' 0"	X
330	239 hp	68,209 lbs	35' 0" / 23' 9"	X

\*FRA compliant, medium pressure + advanced implement control

### AVAILABLE ATTACHMENTS



**20" ASPHALT CUTTERS**



**48" FORESTRY RAKES**  
(Available for 311-315)



**60" FORESTRY RAKES**  
(Available for 320-323)



**BUCKETS**



**COMPACTION WHEELS**



**GRAPTOR BUCKETS**



**HYDRAULIC HAMMERS**



**MULCHERS**



**RIPPERS**



**ROLLER BUCKETS**



**SCREENING BUCKETS**



**TILT BUCKETS**



**TRACK PADS**



**VIBRATORY COMPACTORS**



## TELEHANDLERS



Model	Gross Power	Rated Capacity	Lift Height
TH255	74 hp	5,500 lbs	18' 4"
TL642	101 hp	6,500 lbs	42'
ST8042 (SkyTrak)	110 hp	8,000 lbs	41' 11"
TL943	111 hp	9,000 lbs	43'
ST10054 (SkyTrak)	110 hp	10,000 lbs	53' 2"
TL1055	142 hp	10,000 lbs	54' 9"
TL1255	142 hp	12,000 lbs	54' 6"
XR1570	134 hp	15,000 lbs	70'
Magni 10.10	134 hp	22,000 lbs	31' 2"

### AVAILABLE ATTACHMENTS



ADJUSTABLE MATERIAL ARMS



BASKETS



BUCKETS



HAY FORKS



LIFT HOOKS



TRASH HOPPERS



TRUSS BOOMS



TILT ROTATE CARRIAGES



TIRE SOCKS AVAILABLE FOR PURCHASE



## BACKHOE LOADERS

Model	Approximate Net Power	Approximate Operating Weight	Approximate Depth Standard/Extended
420	93 hp	24,251 lbs	14' 3" / 17' 9"
420 IT	93 hp	24,251 lbs	14' 3" / 17' 9"

### AVAILABLE ATTACHMENTS



BROOM



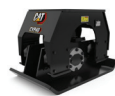
FORKS



GRAPTOR BUCKETS



HYDRAULIC HAMMERS



VIBRATORY COMPACTORS



## SKIP LOADERS

Model	Approximate Net Power	Approximate Operating Weight	Dump Height
415	68 hp	17,637 lbs	9'3"



## COMPACT WHEEL LOADERS

Model	Approximate Net Power	Approximate Operating Weight	Approximate Bucket Capacities	Coupler
906	73 hp	12,346 lbs	1 - 2 yds	X
908	73 hp	14,032 lbs	1 - 2 yds	X

### AVAILABLE ATTACHMENTS



FORKS



SNOW BLOWERS



SNOW PLOWS



## WHEEL LOADERS

Model	Approximate Net Power	Approximate Operating Weight	Approximate Bucket Capacities	Coupler
926	168 hp	28,193 lbs	1.9 - 3.0 yds	X
930	168 hp	31,382 lbs	2.75 - 3.25 yds	X
938	168-182 hp	36,216 lbs	3.0 - 3.5 yds	X
950	230 hp	42,357 lbs	3.75 - 5.75 yds	X

### AVAILABLE ATTACHMENTS



ANGLE BROOMS



FORKS



MATERIAL HANDLING ARMS



SNOW PLOWS



## MOTOR GRADERS

Model	Approximate Net Power	Approximate Operating Weight	Blade Length
12 AWD	183-213 hp	35,783 lbs	14'
140/140 AWD	183-208 hp	42,647 lbs	14'
140 3D	183-208 hp	42,647 lbs	14'

### AVAILABLE ATTACHMENTS



SNOW WINGS

# MISC. EQUIPMENT



## DUMP TRUCKS

6-10 yard



## WATER TRUCKS

2,000 & 4,000 gallon tank capacity



## F150 PICKUPS

4 door crew cab



## PERSONNEL CARTS

1,200 lb - 2,000 lb capacity

2 seat - 4 seat

Gas, diesel and electric options

Snow Plow & Utility Spreader Attachments



## FORK-LIFTS

5K LP & 5K Electric Warehouse Fork Lift

7,000 lbs Rough Terrain Fork Lift



## VACUUM EXCAVATORS

The LP SDT series includes a Yanmar 49-hp Tier 4 diesel engine with 1,000 cfm vacuum blower for both wet and dry applications. Manufactured on a low-profile trailer assembly for easy transport.



## DUMP TRAILERS

14,000 lb capacity

8' x 14' tandem axle



## UTILITY/EQUIPMENT TRAILERS

1,000 lb - 12,000 lb capacity

12' - 20' tilt deck



## GENERATORS

EU2200, 6kw, 25kw, 45kw, 70kw, 85kw, 125kw  
Portable and towable, spider box  
Single and three phase.  
Basecamp 3-in-1 with 27kw generator



## WOOD CHIPPERS 6", 9" & 12" CUTTING CAPACITY

Chips heavily branched material, features  
Vermeer-exclusive SmartFeed system.  
6", 9" and 12" cutting capacity / Gas powered



## PUMPS

Trash; 500-2,000 GPM 4" - 8"  
Submersible; 200-2,000 GPM 2" - 4"



## LIGHT TOWERS

Indoor & outdoor, stabilizers, towable  
Basecamp 3-in-1 with 192,000 lumens  
light tower



## PORTABLE AIR COMPRESSORS

185/375/400/750  
Towable, accessories available



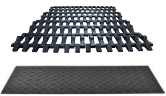
## JOBSITE HEAT SOLUTIONS

Flameless, diesel, or propane  
500,000 - 1,000,000 BTU  
6,447 CFM air output  
5.34 gal/h fuel consumption  
Basecamp 3-in-1 700,000 BTU heater



## GROUND THAWS

2,400 sq ft - 6,000 sq ft ground thaw,  
6,000 sq ft - 18,000 sq ft concrete cure



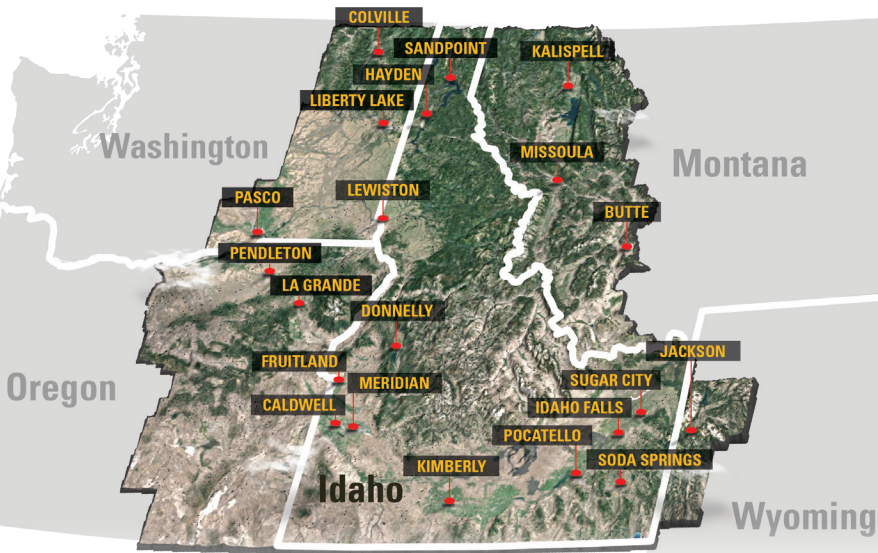
## SITE ACCESS

10'x16' track mats  
4'x8' work pads



## SPILL CONTAINMENT BERMS

4'x8', 235 gal spill capacity  
Black polyethylene



## IDAHO

**CALDWELL, ID**  
208-926-1016

**DONNELLY, ID**  
986-786-1601

**FRUITLAND, ID**  
208-775-2589

**HAYDEN, ID**  
208-759-4658

**IDAHO FALLS, ID**  
208-744-6136

**KIMBERLY, ID**  
208-689-2334

**LEWISTON, ID**  
208-646-5494

**MERIDIAN, ID**  
208-682-1825

**POCATELLO, ID**  
208-927-3674

**SANDPOINT, ID**  
986-235-0224

**SODA SPRINGS, ID**  
208-943-3219

**SUGAR CITY, ID**  
208-782-7241

## MONTANA

**BUTTE, MT**  
406-476-7780

**MISSOULA, MT**  
406-623-7704

**KALISPELL, MT**  
406-770-7536

## OREGON

**LA GRANDE, OR**  
541-351-7606

**PENDLETON, OR**  
541-395-6968

## WASHINGTON

**COLVILLE, WA**  
509-463-5564

**LIBERTY LAKE, WA**  
509-204-9149

**PASCO, WA**  
509-512-2681

## WYOMING

**JACKSON, WY**  
307-374-8873

## OUR COMMITMENT TO YOU

- Unwavering Safety
- Highly Responsive Rail Support
- 24/7 Emergency Response
- Excellence in Service
- Cutting-edge Innovation
- Solution Oriented

## CONTACT US

**Railroad Team:** 877-994-4228

**Email:** [RRSRentals@wseco.com](mailto:RRSRentals@wseco.com)