



HEAVY RENTS

EQUIPMENT LINE CARD







CONTENTS

Excavators	6
Motor Graders	7
Dozers	8
Wheel Loaders	9
Asphalt Compactors	10
Pneumatic Tired Compactors	10
Soil Compactors	11
Articulated Trucks	12
Tracked Dump Trucks	12
Scrapers & Water Equipment	13

BUILT FOR THE WAY YOU WORK

You need functional, well maintained equipment, and you need it now. We've got you covered. At Western States Cat we are ready to fulfill your Heavy Rents needs with flexible options to keep your business profitable and on-time whether you need a machine for a week, a month, or longer.

The equipment you need and the team to support your operation, when you need it. That's the promise we're built to deliver because together, we build the future.

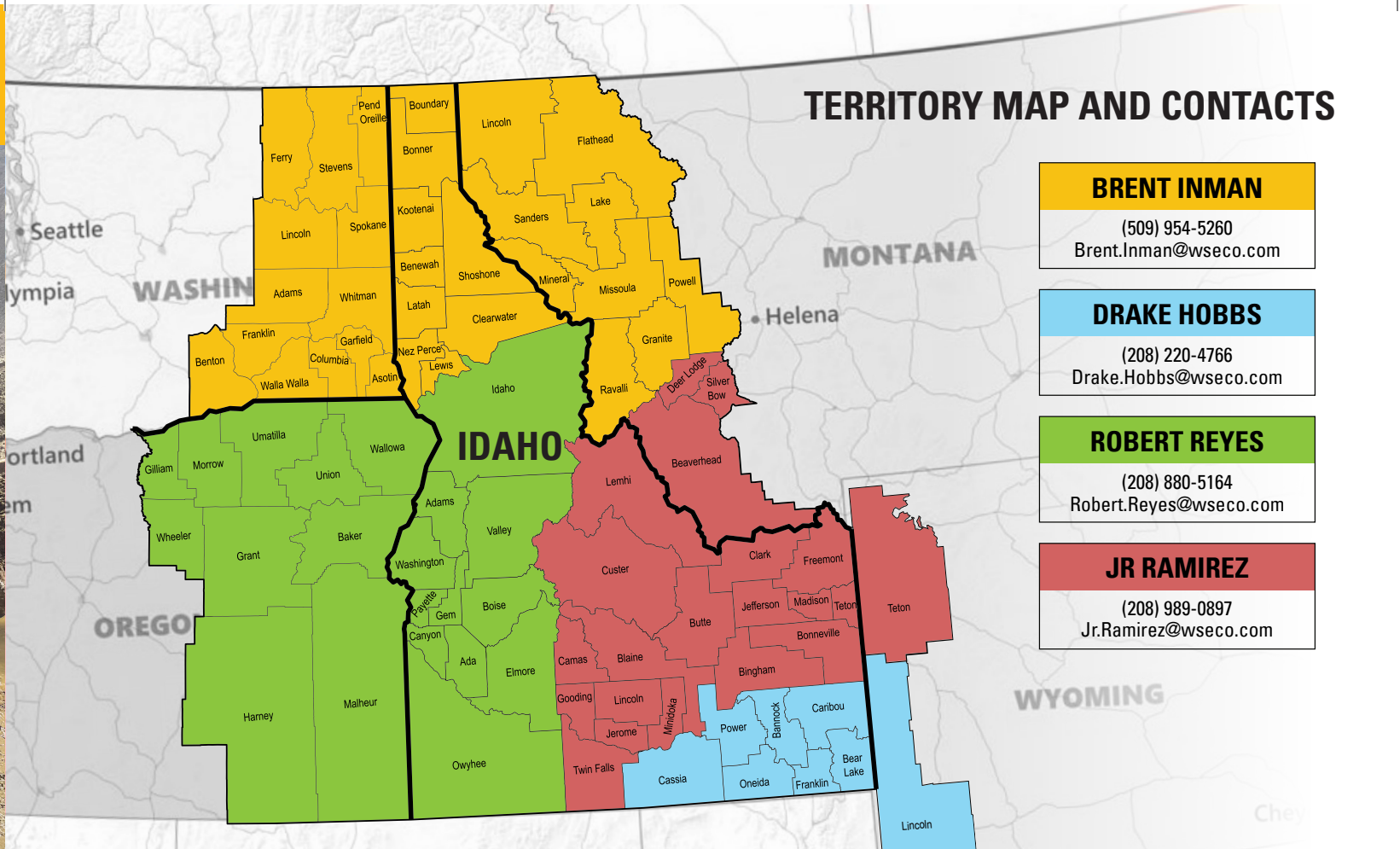
RESERVE YOURS TODAY
800-852-2287

OUR MISSION

With an unwavering commitment to the safety of our employees and customers, Western States Cat delivers best-in-class products and unparalleled support at exceptional value -- empowering our partners' success while helping build stronger, more resilient communities for a better tomorrow.



TERRITORY MAP AND CONTACTS



BRENT INMAN
(509) 954-5260
Brent.Inman@wseco.com

DRAKE HOBBS
(208) 220-4766
Drake.Hobbs@wseco.com

ROBERT REYES
(208) 880-5164
Robert.Reyes@wseco.com

JR RAMIREZ
(208) 989-0897
Jr.Ramirez@wseco.com

EXCAVATORS



Excavator attachments available:

36" Compaction Wheel for 336 Excavator

36" Compaction Wheel for 349 Excavator

Cat H-160 Hammer for 336 Excavator 8,000lb Hammer

Cat H-180 Hammer for 349 Excavator 10,000lb Hammer

MP 30 Multi-Processor for 349 Excavator

Concrete cutter

Shear Jaws

Model	HP	Approximate Weight (lbs)	Bucket	Max Reach/Depth	Configurations
330 Long Reach	204	69,902	1 Yard Muck	60' / 48'4"	Pin on Bucket
335	204	81,315	36" - 60"	10'6" Stick 33'4" / 21'2"	Quick Coupler/Thumb
336	303	88,400	36" - 72"	12'10" Stick 38'5" / 26'10"	Quick Coupler/Thumb
340	347	82,700	36" - 72"	12'10" Stick 38'6" / 26'5"	Quick Coupler/Thumb
349	425	112,400	36" - 80"	12'10" Stick 39'10" / 26'11"	Quick Coupler/Thumb
352	443	111,500	36" - 80"	12'10" Stick 39'10" / 26'11"	Quick Coupler/Thumb
374	476	166,661	48" - 90"	15'4" Stick 46'7" / 31'7"	Quick Coupler
395	542	209,400	98"	41'8" / 24'8"	Pin on Bucket

MOTOR GRADERS



Model	HP	Approximate Weight (lbs)	Blade Length (ft)	Configurations
14 / 14M3 Standard Drive	238-285	57,250	16'	Ripper(s)/ARO

DOZERS



Model	HP	Approximate Weight (lbs)	Blade	Configurations
D6N LGP	150	39,895	VPAT	Drawbar/ARO
D5 LGP	170	42,263	VPAT	Drawbar/ARO
D6T XL	202	52,167	VPAT/SU	Ripper(s) ARO
D6 / D6T XW	215 / 202	53,170	VPAT/SU	Ripper(s) ARO
D6 / D6T LGP	215 / 202	53,561	VPAT	Ripper(s) ARO
D8 / D8T	363 / 312	87,733	U	Ripper(s) ARO
D9	487	110,225	SU/U	Ripper(s) ARO

WHEEL LOADERS

6' and 8' pallet forks available for 966-972 only



Model	HP	Approximate Weight (lbs)	Bucket Capacity (yards)	Configurations
966 / 966M	321 / 311	52,161	5 - 6.25 Yard Bucket	Fusion Quick Coupler
972 / 972M	337	56,123	5.50 - 6.50 Yard Bucket	Fusion Quick Coupler
980 / 980M	425	66,623	7 - 8 Yard Bucket	Pin On Bucket
982	404	78,264	9.25 Yard Bucket	Pin On Bucket

COMPACTORS



ASPHALT COMPACTORS

Model	HP	Approximate Weight (lbs)	Drum Width (in)
CB54 XW	137	26,230	79
CB13	142	28,440	79
CB15	142	30,391	84
CB64	137	28,616	84
CB66	142	29,057	84



PNEUMATIC TIRED COMPACTORS

Model	HP	Approximate Weight (lbs)	Compaction Width (in)
CW14	100.5	28,528	68
CW16	100.5	33,069	68

SOIL COMPACTORS

Model	HP	Approximate Weight (lbs)	Drum Width (in)
CP56B	157	25,707	84
CP12	159	26,266	84
CS12	120	27,900	84
CS56B	157	25,346	84
CS68B	157	31,572	84
CS74B	173	35,264	84



SOIL COMPACTORS

Model	HP	Approximate Weight (lbs)	Blade Width (ft. in)
815 / 815K	248	49,353	12.4



ARTICULATED TRUCKS • TRACKED DUMP TRUCKS



ARTICULATED TRUCKS

Model	HP	Operating Weight (empty)	Capacity/Heaped (yds ³)	Notes
730	321	50,376 lbs	24.0	Tailgate
730C	370	53,131 lbs	24.6	Tailgate
745	504	73,634 lbs	34.7	Tailgate



TRACKED DUMP TRUCKS

Model	HP	Operating Weight (empty)	Capacity/Heaped (yds ³)	Notes
TERRAMAC RT14R	320	42,000	9.5	Rubber Track

SCRAPERS • WATER EQUIPMENT

SCRAPERS



Model	HP	Cap. Struck/ Heaped (yd ³)	Top Speed Load (mph)
623	330/365	18/23	32
627	330/365	16/22	32

WATER EQUIPMENT



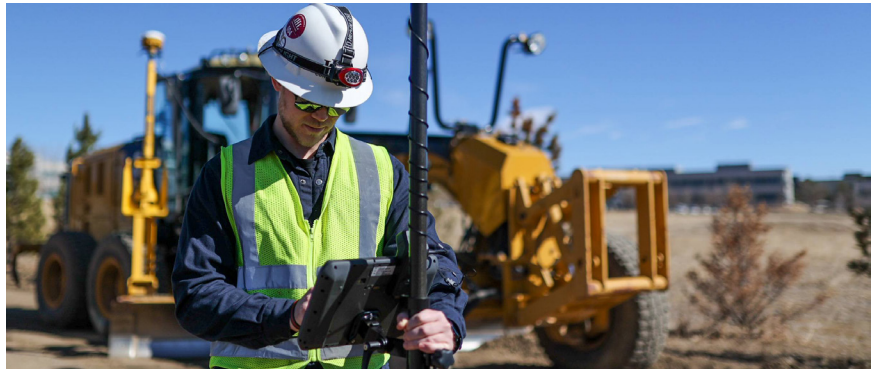
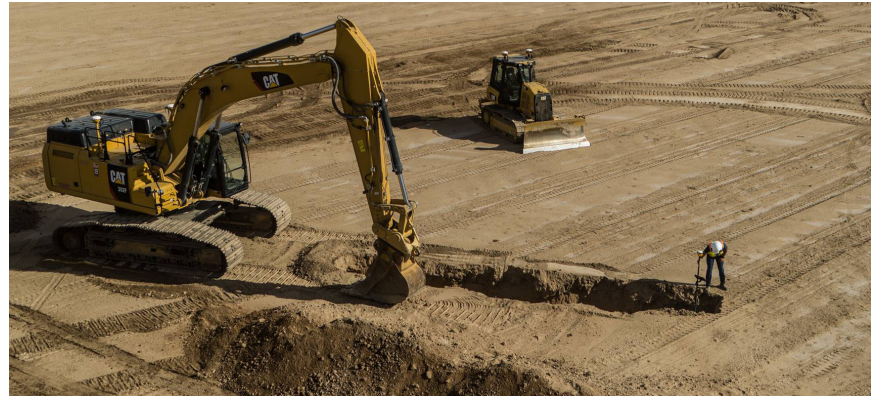
Capacity	Transport
12,000 Gallon Stand Tank	5th Wheel
6,000 Gallon	730 Water Truck
8,000 Gallon	745 Water Truck

THE TECHNOLOGY YOU WANT



Whether you are experienced in the use of technology to enhance machine productivity or new to electronic productivity tools, our experienced award-winning team of construction technology specialists are ready to assist your organization with expertise in Trimble/Caterpillar grade control, telematics and productivity technology. Rent GPS ready machines to accept your Cat/Trimble system or rent an additional system with the machine through our Worksite Solutions department.

LEARN MORE





TOGETHER, WE BUILD THE FUTURE.
800-852-2287

All rentals subject to credit approval. Customer must provide proof of insurance. Rates do not include any local sales tax. All rates are on a per machine basis. All machines are subject to availability. There is a charge on top of the rental rate for property tax. All daily maintenance such as oil, filters, wear items and fuel are the responsibility of the lessee. At the termination of the rental, the machine must be returned in the same condition as when it was delivered, subject only to reasonable wear.